



dōTERRA®



Changing the world **ONE DROP, ONE PERSON, ONE COMMUNITY AT A TIME**

dōTERRA: MEANING “GIFT OF THE EARTH”

In 2008, a group of healthcare and business professionals came together with a common vision of sharing the power of essential oils with the world. Each understood that essential oils—when properly sourced from optimal regions and thoroughly tested for the highest levels of purity and potency—are the Earth’s gift to humanity. With this gift comes great responsibility to respect the power of each element, the expertise of each grower, and the potential of each contributing community.

dōTERRA focuses on maintaining the highest levels of purity and sustainability as it partners with local growers around the world through Cō-Impact Sourcing. This unique model implements long-term, mutually beneficial supplier partnerships where skilled rural farmers oversee plants and growing environments. In return, dōTERRA provides jobs with fair payments, leading to stronger local economies and healthier, stable supply chains.

Each dōTERRA essential oil passes through rigorous CPTG® testing guided by cutting-edge advancements in essential oil research and testing implementation. dōTERRA benefits from the ever-increasing knowledge and expertise of a scientific board made up of global consultants in chemistry, microbiology, botany, research science, physiology, and nutritional science.

Since its beginning, independent Wellness Advocates have shared the life-enhancing benefits of dōTERRA’s CPTG® essential oils with millions of customers throughout the world.

dōTERRA has emerged as a global integrative health and wellness company and the world’s largest essential oil company.* By partnering with respected medical professionals and world-renowned research partners, dōTERRA is revolutionizing healthcare by integrating conventional medical professionals with alternative approaches to address individualized health and wellness.

To ensure that dōTERRA never forgets the sacredness of this gift, the dōTERRA Healing Hands Foundation® offers resources and tools to global sourcing communities and charitable organizations for self-reliance, healthcare, education, sanitation, and the fight against human trafficking.

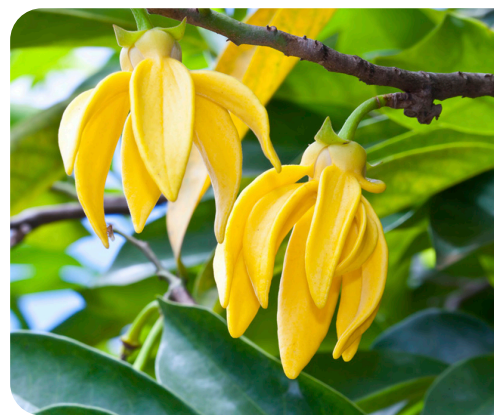
We respectfully offer this “gift of the Earth” to you and your family.

* Verified global market leader in the Global Aromatherapy and Essential Oils market.



**dōTERRA BALANCE®
GROUNDING
BLEND**

PAGE 33





PETAL DIFFUSER
PAGE 37



CONTENTS

- 4 WHAT ARE ESSENTIAL OILS?
- 5 CPTG® TESTING
- 6 ESSENTIAL OIL USES
- 8 WHERE DO I BEGIN?
- 10 ESSENTIAL OIL SINGLES
- 20 ESSENTIAL OIL KITS
- 30 ESSENTIAL OIL BLENDS
- 37 DIFFUSERS & CORRECT-X®
- 38 DEEP BLUE®
- 39 EASY AIR®
- 40 YARROW|POM
- 41 WELLNESS
- 42 ON GUARD®
- 44 VERÁGE®
- 45 dōTERRA HD CLEAR®
- 46 ESSENTIAL SKIN CARE
- 48 HAIR CARE
- 50 dōTERRA SPA
- 51 HEALING HANDS

dōTERRA® ESSENTIAL SKIN CARE

PAGE 46



dōTERRA® proprietary essential wellness products are sold exclusively by Wellness Advocates through person-to-person sharing, personalized websites, and in product centers. To order, talk to the Wellness Advocate who provided you with this product guide or call +603 2633 7888 to find an advocate in your area. Wellness Advocate distributorships are available.



What are **ESSENTIAL OILS?**

Essential oils are natural aromatic compounds found in the seeds, bark, stems, roots, flowers, and other parts of plants. They can be both beautifully and powerfully fragrant. If you have ever enjoyed the gift of a rose, a walk by a field of lavender, or the smell of freshly cut mint, you have experienced the aromatic qualities of essential oils. Essential oils can lift the mood, calm the senses, and elicit powerful emotional responses. Yet the use of essential oils goes well beyond their fragrant appeal.

Essential oils have been used throughout history in many cultures for their health-promoting properties. Modern trends toward more holistic approaches to self care and growing scientific validation of alternative health practices are driving a rediscovery of the profound health benefits of essential oils. Many have powerful cleansing properties. Their unique chemical structure allows them to deliver targeted benefits through topical application. Certain oils may be used to promote well-being.

Extraction Methods

Essential oils are most often extracted via a steam distillation process in which steam is circulated under pressure through plant material, liberating the essential oils into the steam. As the steam mixture cools, the water and oils are separated and the oil is collected in its pure form. To ensure the highest quality oil extract of correct chemical composition, temperature and pressure must be monitored very closely. Too little heat and pressure will not release the valuable oil; too much can fracture an extract's delicate chemical composition and alter its potency.

In addition to using proper distillation methods, creating a quality CPTG® essential oil requires the meticulous selection of the correct plant species and plant parts, harvested at the perfect moment when their aromatic compounds are most concentrated. This complex process is as much an art form as it is a science and requires experienced growers and distillers working together to ensure a superior product.





CPTG® Testing

dōTERRA® CPTG® essential oils are pure, natural, aromatic compounds carefully extracted from plants. They do not contain fillers or artificial ingredients that would dilute their active qualities and are free of contaminants or other chemical residues.

As important as it is to keep contaminants out of our oils, assuring the presence of the oils' active compounds at the right levels is necessary to guarantee safety and effectiveness. Many oils claim to be therapeutic grade—and some may be pure—but few are subjected to rigorous testing standards for chemical composition. dōTERRA CPTG® essential oils are cross tested using Mass Spectrometry and Gas Chromatography to ensure both the extract purity and composition potency of each batch.

dōTERRA works closely with a global network of leading essential oil chemists and growers to select botanicals of the correct species, grown in ideal environments, and carefully harvested at the right time. The aromatic compounds of the plants are skillfully extracted by experienced distillers and subjected to chemical analysis to ensure purity and composition. dōTERRA CPTG® essential oils represent the safest and most beneficial oils available in the world today.

Equally stringent standards of safety and efficacy are applied to all dōTERRA Essential Wellness products. Guided by our Scientific Advisory Board, dōTERRA uses only top development and manufacturing partners who maintain Good Manufacturing Practice (GMP) certification and enjoy industry reputation for superior innovation and quality. Each dōTERRA product is guaranteed to exceed customer satisfaction and performance expectations.





ESSENTIAL OIL USES

Essential oils are used for a very wide range of applications. They can be used individually or in complex blends depending on user experience and desired benefit. Essential oils are usually administered by one of two methods: diffused aromatically or applied topically to the skin. Using essential oils can be both profoundly simple and life changing at the same time. Working with someone who has used essential oils before will help first-time users have a more beneficial and enjoyable experience.

Essential oils are naturally safe and have few, if any, undesirable side effects when used as directed. They are, however, powerfully concentrated and should be used with care. Be sure to use only pure essential oils and follow all label warnings and instructions. Essential oils should never be used in the eyes or inside the ear canal. If redness or irritation occurs when using essential oils topically, apply a vegetable oil such as Fractionated Coconut Oil to the affected area—water will not dilute essential oils. Consult your physician before using essential oils if you are pregnant or under a doctor's care.

Application Methods

- A** Can be used **aromatically**
- T** Can be used **topically**

Sensitive Skin

- N** Can be used with no dilution (**neat**)
- S** Dilute for young or sensitive skin (**sensitive**)
- D** Dilute before using topically (**dilute**)

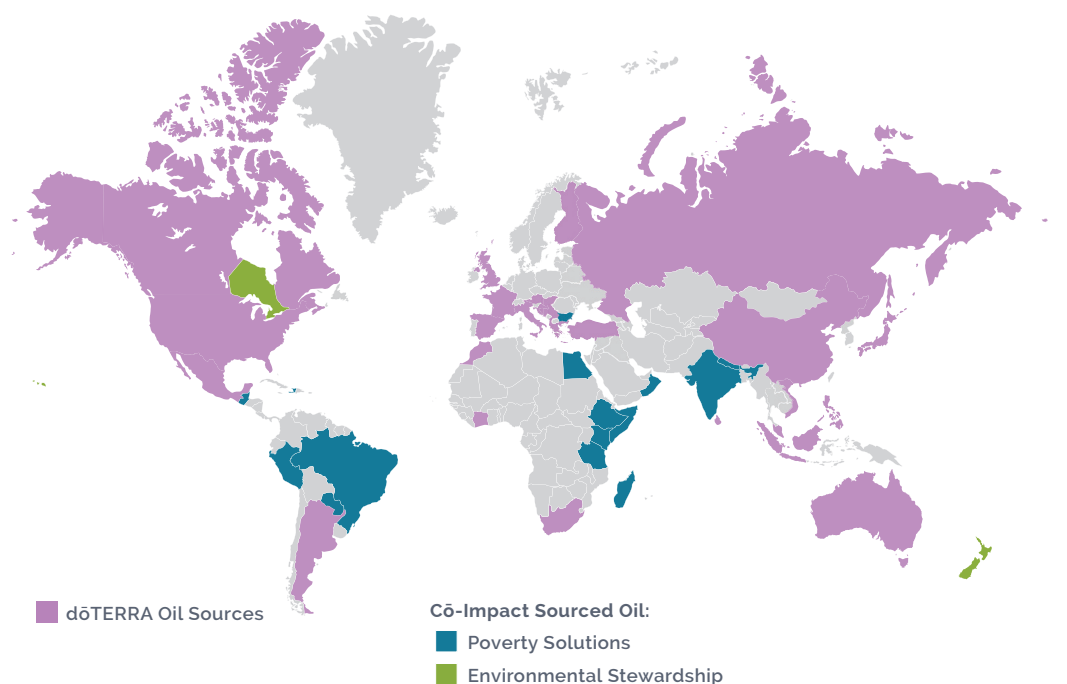
Look for the above symbols by the essential oil product descriptions in this product guide to help you with your oil selection. (Use instructions and appropriate cautions are included on individual essential oil labels.)

Please note, some products can be used in multiple ways.

The dōTERRA® network of botanical growers and distillers spans the globe from Italy to Madagascar, Argentina to New Zealand. Only the purest and most potent essential oils meet our strict CPTG Certified Pure Tested Grade® standards. Accept nothing less from your wellness professional or for your family.

As dōTERRA searches the world for sources of the highest quality oils, we are also committed to building relationships that last and benefit our growers. We accomplish this by adhering to our Sourcing Guiding Principles.

Over half of the countries that dōTERRA sources its more than 130 oils from are considered developing countries. Through Cō-Impact Sourcing, dōTERRA is lifting communities in these areas out of poverty and disadvantage by providing long-term, mutually beneficial supplier partnerships with sustainable jobs and reliable income.



Where do I BEGIN?

Using essential oils is intuitively simple and highly satisfying. However, the many oils available with their numberless combinations and wellness applications can be a bit overwhelming to beginners. As a simple first step on your journey with essential oils, we recommend a trio of Lavender, Lemon, and Peppermint. Three of our most popular oils, they will provide you and your family a compelling experience with the life-enhancing properties of essential oils.



INTRODUCTORY KIT TOP SELLER

Perfect for beginners, the Introductory Kit is everything you need to get started experiencing immediately the life-changing benefits of dōTERRA® essential oils. The kit includes:

- Lavender essential oil (5mL bottle)
- Lemon essential oil (5mL bottle)
- Peppermint essential oil (5mL bottle)

60205766 | Three 5mL bottles



Lavender Essential Oil

All Things Calming

- Helps ease feelings of tension
- Massage on back or bottom of feet and apply a drop to pillow at bedtime
- Apply topically to soothe skin



Lemon Essential Oil

Clean and Freshen

- Uplifting, positive aroma
- Use to clean kitchen counters and stainless- steel appliances



Peppermint Essential Oil

Cool and Invigorate

- Use with Lemon in water for a healthy, refreshing mouth rinse
- Inhale deeply to enjoy its invigorating aroma
- Add to water in a spray bottle and mist body when overheated
- Apply to neck and forehead for a unique sensation



Lavender *Lavandula angustifolia*

- Apply to the bottom of feet or on a pillow before sleeping
- Use with bath salts for a relaxing spa bathing experience
- Lightly apply to soothe sun-exposed skin
- Apply to back, hands, or feet of a restless or agitated child
- Use to calm and soothe occasional skin irritations
- Calm sensitive skin and soothe pores after hair removal
- Apply to dry, chapped lips before applying lip balm
- Use with Peppermint for a healthy scalp massage
- Add to lotion for a stress-relieving hand massage



Lemon *Citrus limon*

- Diffuse aromatically or apply topically for an uplifting and positive aroma
- Dilute with coconut oil for a daily fingernail conditioning massage
- Add a drop of Lemon and Peppermint to your toothbrush after use
- Diffuse in a room to neutralize odors
- Remove gum, label adhesives, and greasy substances from fabric
- Use to clean kitchen counters and stainless steel appliances
- Add to olive oil for a non-toxic furniture polish



Peppermint *Mentha piperita*

- Use with Lemon in water for a healthy, refreshing mouth rinse
- Diffuse aromatically or apply topically for an invigorating vapor
- Add to a cold water compress or foot bath to cool off when overheated
- Inhale as a non-stimulant, invigorating pick-me-up on long drives
- Add to shampoo and conditioner for a stimulating hair and scalp massage
- Diffuse during study time



dōTERRA lavender fields, Bulgaria.

ESSENTIAL OIL SINGLES

The dōTERRA® collection of single essential oils represents the finest aromatic extracts available in the world today. Each oil provides the living essence of its source botanical, gently distilled from plants that are nurtured and carefully harvested throughout the world. Each oil passes strict standards of purity and potency. A beautiful palette of botanical energies, they can be used individually or blended for personalized essential oil benefits.

ARBORVITAE ESSENTIAL OIL

Thuja plicata

Known as the “tree of life,” Arborvitae is majestic in size and abundant in benefits.

- Helps promote clear and healthy-looking skin
- Powerful cleansing and purifying agent
- Naturally repels insects



49361507 | 5mL bottle

BASIL ESSENTIAL OIL

Ocimum basilicum

Basil is commonly used for its calming properties.

- Helps keep your skin looking clean, clear, and healthy
- Promotes mental alertness and lessens anxious feelings



30011507 | 15mL bottle

BERGAMOT ESSENTIAL OIL

Citrus bergamia

Cold pressed from the rind of the bergamot fruit, Bergamot is unique among citrus oils.

- Calming and soothing aroma
- Frequently used in massage therapy for its calming benefits
- Apply to the skin while showering and inhale deeply to experience its calming aroma while enjoying its purifying skin benefits



30791507 | 15mL bottle

BLACK PEPPER ESSENTIAL OIL

Piper nigrum

Stimulating and flavorful.

- Diffuse or inhale directly to soothe anxious feelings



41041507 | 5mL bottle

BLACK SPRUCE ESSENTIAL OIL

Picea mariana

Black Spruce is a powerful wood essential oil. Distilled from the needle and branches of the Picea mariana tree, Black Spruce essential oil promotes relaxation and calmness.

- Incorporate Black Spruce into a comforting massage experience to soothe the skin after strenuous exercise
- Calming and grounding to the emotions
- Promotes feelings of easy breathing



60209740 | 5mL bottle



SINGLE ESSENTIAL OILS

Quick Reference Chart

	APPLICATION		SKIN SENSITIVITY			SKU
	AROMATIC	TOPICAL	NEAT	SENSITIVE	DILUTE	
ARBORVITAE <i>Thuja plicata</i>	A	T	N			49361507
BASIL <i>Ocimum basilicum</i>	A	T	N			30011507
BERGAMOT <i>Citrus bergamia</i>	A	T		S		30791507
BLACK PEPPER <i>Piper nigrum</i>	A	T		S		41041507
BLACK SPRUCE <i>Picea mariana</i>	A	T		S		60209740
CARDAMOM <i>Elettaria cardamomum</i>	A	T	N			49351507
CASSIA <i>Cinnamomum cassia</i>	A	T			D	30021507
CEDARWOOD <i>Juniperus virginiana</i>	A	T		S		49301507
CILANTRO <i>Coriandrum sativum</i>	A	T	N			41851507
CINNAMON BARK <i>Cinnamomum zeylanicum</i>	A	T			D	30031507
CLARY SAGE <i>Salvia sclarea</i>	A	T	N			30421507
CLOVE <i>Eugenia caryophyllata</i>	A	T			D	30041507
COPAIBA <i>Copaifera reticulata, officinalis, coriacea, and langsdorffii</i> TOP SELLER	A	T		S		60202987
CORIANDER <i>Coriandrum sativum</i>	A	T	N			30781507
CYPRESS <i>Cupressus sempervirens</i>	A	T	N			30051507
DOUGLAS FIR <i>Pseudotsuga menziesii</i>	A	T	N			31591507
EUCALYPTUS <i>Eucalyptus radiata</i>	A	T		S		30061507
FENNEL (SWEET) <i>Foeniculum vulgare</i>	A	T		S		41291507
FRANKINCENSE <i>Boswellia carterii, sacra, papyrifera, and frereana</i> TOP SELLER	A	T	N			30071507
GERANIUM <i>Pelargonium graveolens</i>	A	T		S		30091507
GINGER <i>Zingiber officinale</i>	A	T		S		31631507
GRAPEFRUIT <i>Citrus x paradisi</i>	A	T	N			30101507
HAWAIIAN SANDALWOOD <i>Santalum paniculatum</i>	A	T	N			41861507
HELICHRYSUM <i>Helichrysum italicum</i>	A	T	N			30411507
JUNIPER BERRY <i>Juniperus communis</i>	A	T	N			49291507
LAVENDER <i>Lavandula angustifolia</i> TOP SELLER	A	T	N			30111507
LEMON <i>Citrus limon</i> TOP SELLER	A	T	N			30121507
LEMONGRASS <i>Cymbopogon flexuosus</i>	A	T		S		30131507
LIME <i>Citrus aurantifolia</i>	A	T		S		30871507
LITSEA <i>Litsea cubeba</i>	A	T	N			60202070
MANUKA <i>Leptospermum scoparium</i>	A	T	N			60202073
MARJORAM <i>Origanum majorana</i>	A	T	N			30141507

APPLICATION METHODS

A Can be used aromatically T Can be used topically

SKIN SENSITIVITY

N Can be used topically with no dilution (NEAT) S Dilute for young or sensitive skin (SENSITIVE) D Dilute before using topically (DILUTE)

SINGLE ESSENTIAL OILS

Quick Reference Chart Continued

	APPLICATION		SKIN SENSITIVITY			SKU
	AROMATIC	TOPICAL	NEAT	SENSITIVE	DILUTE	
MELISSA <i>Melissa officinalis</i>	A	T	N			60200290
MYRRH <i>Commiphora myrrha</i>	A	T	N			30161507
OREGANO <i>Origanum vulgare</i> TOP SELLER	A	T			D	30181507
PATCHOULI <i>Pogostemon cablin</i>	A	T	N			30891507
PEPPERMINT <i>Mentha piperita</i> TOP SELLER	A	T		S		30191507
PETITGRAIN <i>Citrus aurantium</i>	A	T		S		60202080
PINK PEPPER <i>Schinus molle</i>	A	T	N			60209300
ROMAN CHAMOMILE <i>Anthemis nobilis</i>	A	T	N			60201085
ROSE <i>Rosa damascena</i>	A	T		S		60200289
ROSEMARY <i>Rosmarinus officinalis</i>	A	T	N			30201507
SIBERIAN FIR <i>Abies sibirica</i>	A	T	N			60203273
SPEARMINT <i>Mentha spicata</i>	A	T		S		31611507
SPIKENARD <i>Nardostachys jatamansi</i>	A	T	N			60202071
TANGERINE <i>Citrus reticulata</i>	A	T	N			60202719
TEA TREE <i>Melaleuca alternifolia</i> TOP SELLER	A	T	N			30151507
THYME <i>Thymus vulgaris</i>	A	T			D	60206102
TURMERIC <i>Curcuma longa</i>	A	T	N			60208227
VETIVER <i>Vetiveria zizanioides</i>	A	T	N			30431507
WILD ORANGE <i>Citrus sinensis</i> TOP SELLER	A	T	N			30171507
WINTERGREEN <i>Gaultheria fragrantissima</i>	A	T		S		31621507
YARROW POM <i>Active Botanical Duo</i>		T	N			60210082
YLANG YLANG <i>Cananga odorata</i>	A	T	N			30241507

APPLICATION METHODS A Can be used aromatically T Can be used topically

SKIN SENSITIVITY N Can be used topically with no dilution (NEAT) S Dilute for young or sensitive skin (SENSITIVE) D Dilute before using topically (DILUTE)

SINGLE TOUCH FLORALS

Quick Reference Chart

JASMINE TOUCH <i>Jasminum grandiflorum</i>	A	T	N			60202985
NEROLI TOUCH <i>Citrus x aurantium</i>	A	T	N			60202983
ROSE TOUCH <i>Rosa damascena</i>	A	T	N			60202969

CARDAMOM ESSENTIAL OIL

Elettaria cardamomum

A close relative of ginger, Cardamom has a long history as a cooking spice and for being beneficial to the body.

- Promotes clear breathing



49351507 | 5mL bottle

CASSIA ESSENTIAL OIL

Cinnamomum cassia

Closely related to cinnamon, Cassia has a wonderful fragrance and thousands of years of historical use.

- Dilute with a carrier oil and apply to skin or body for a cleaning effect



30021507 | 15mL bottle

CEDARWOOD ESSENTIAL OIL

Juniperus virginiana

Cedarwood has a warm, woody, balsamic fragrance that promotes relaxation.

- During your facial routine, add one to two drops of Cedarwood to your facial toner or moisturizer for added clarifying properties
- Add to mulch or topsoil to repel insects
- Promotes relaxation



49301507 | 15mL bottle

CILANTRO ESSENTIAL OIL

Coriandrum sativum

From the leaves of the coriander plant, Cilantro essential oil is commonly used for its fresh and tasty flavor.

- For a fresh, herbal aroma, diffuse three to four drops of Cilantro with the citrus essential oil of your choice



41851507 | 15mL bottle

CINNAMON BARK ESSENTIAL OIL

Cinnamomum zeylanicum

Well known for its use as a spice, Cinnamon also has many health-promoting benefits.

- During the cold weather, dilute Cinnamon Bark with Fractionated Coconut Oil and create a warming massage for cold, achy joints



30031507 | 5mL bottle

CLARY SAGE ESSENTIAL OIL

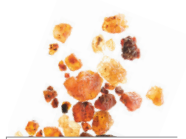
Salvia sclarea

Clary Sage is known for its soothing and calming properties.

- During your menstrual cycle, apply to abdomen for a soothing massage
- Combine with Roman Chamomile and add to bath water for a stress-relieving bath
- Promotes healthy-looking hair and scalp



30421507 | 15mL bottle



PRODUCT HIGHLIGHT

Frankincense

doTERRA Frankincense essential oil is steam-distilled from wild-crafted gum resins of the *Boswellia carterii*, *frereana*, and *sacra* trees. Highly prized in the ancient world for its fragrant and health-promoting properties, it is a favorite among modern wellness practitioners for its many emotional and physical health applications.

CLOVE ESSENTIAL OIL

Eugenia caryophyllata

Known as a popular cooking spice, Clove has many beneficial uses.

- Promotes healthy teeth and gums



30041507 | 15mL bottle

COPAIBA ESSENTIAL OIL

TOP SELLER

Copaifera reticulata, officinalis, coriacea, and langsdorffii

Copaiba, similar to Black Pepper, can help soothe anxious feelings and nourish the skin.

- Helps soothe anxious feeling
- Promotes clear, smooth skin and reduces the appearance of blemishes



60202987 | 15mL bottle

CORIANDER ESSENTIAL OIL

Coriandrum sativum

Popular across many cultures for various uses, Coriander essential oil provides a myriad of health benefits.

- Add to oily skin to maintain a clear complexion
- After a short workout, apply Coriander to legs for a soothing massage



30781507 | 15mL bottle

CYPRESS ESSENTIAL OIL

Cupressus sempervirens

Distilled from the twigs and foliage of the cypress tree, Cypress essential oil is popular for its energizing properties and use in spas.

- Prior to a long run, apply Cypress to your feet and legs for an energizing boost
- Apply two to three drops to chest to promote vitality and energy
- Add one to two drops to your toner to help improve the appearance of oily skin



30051507 | 15mL bottle

DOUGLAS FIR ESSENTIAL OIL

Pseudotsuga menziesii

dōTERRA Douglas Fir is sustainably sourced from young, pre-coning trees, giving it a chemical composition that's particularly rich in β -pinene and esters.

- Add to facial cleanser, bar soap, or body wash for added cleansing benefits and an invigorating aroma
- Promotes feelings of clear airways and easy breathing
- Uplifts mood and promotes a sense of focus



31591507 | 5mL bottle

EUCALYPTUS ESSENTIAL OIL

Eucalyptus radiata

Derived from eucalyptus leaves, Eucalyptus essential oil has many beneficial compounds.

- Place one to two drops in your hand and inhale deeply to clear the mind
- Add one drop to moisturizer and apply to skin for revitalizing benefits
- Promotes feelings of clear breathing



30061507 | 15mL bottle

FENNEL (SWEET) ESSENTIAL OIL

Foeniculum vulgare

Used for centuries, Fennel provides many health benefits and has a distinct licorice aroma.

- Helps support feelings of clear airways



41291507 | 15mL bottle

FRANKINCENSE ESSENTIAL OIL

TOP SELLER

Boswellia carterii, sacra, papyrifera, and frereana

Perhaps the most precious of the ancient oils, Frankincense is highly versatile in uses and benefits.

- Add to moisturizer to help reduce the appearance of skin imperfections and rejuvenate skin
- Apply to the bottom of feet to promote feelings of relaxation and to balance mood



30071507 | 15mL bottle

GERANIUM ESSENTIAL OIL

Pelargonium graveolens

Known for its ability to balance emotions, Geranium is also a common ingredient in skin care products. Dilute with a carrier oil before applying.

- Apply to skin or enjoy an aromatherapy steam facial to beautify skin
- Apply to skin after showering for a soothing effect
- Add a few drops to your shampoo or conditioner for a healthy, vibrant glow



30091507 | 15mL bottle

“Sandalwood is earthy and calming. I use it when I need grounding by applying a few drops on the soles of my feet or adding it in my work diffuser. Amazing results; Sandalwood can change my clients’ mood and helps me focus on what matters.”

Jacqueline L., Victoria, Australia



GINGER ESSENTIAL OIL

Zingiber officinale

Ginger is most noted for its positive effect.

- Apply topically to help reduce occasional nausea
- Apply topically to help support healthy digestion
- Apply topically to reduce bloating, gas, and occasional indigestion

A T S

31631507 | 15mL bottle

GRAPEFRUIT ESSENTIAL OIL

Citrus x paradisi

Energizing and invigorating, Grapefruit is renowned for its cleansing effects.

- Improves the appearance of blemishes
- Diffuse to increase motivation

A T N

30101507 | 15mL bottle

HAWAIIAN SANDALWOOD ESSENTIAL OIL

Santalum paniculatum

From a renewable source in Hawaii, dōTERRA® Hawaiian Sandalwood delivers a variety of benefits.

- Helps improve the appearance of skin and hair
- Apply to the neck and shoulders at bedtime for a restful night's sleep

A T N

41861507 | 5mL bottle

APPLICATION METHODS

A Can be used aromatically T Can be used topically

SKIN SENSITIVITY

N Can be used topically with no dilution (NEAT) S Dilute for young or sensitive skin (SENSITIVE) D Dilute before using topically (DILUTE)

HELICHRYSUM ESSENTIAL OIL

Helichrysum italicum

Distilled from the flower cluster of an evergreen herb, Helichrysum is one of the most precious and sought-after essential oils.

- Apply to the face to reduce the appearance of wrinkles and to promote a glowing, youthful complexion
- Massage into the temples and back of neck for a soothing sensation



30411507 | 5mL bottle

JUNIPER BERRY ESSENTIAL OIL

Juniperus communis

The woody, spicy, yet fresh aroma of Juniper Berry reveals its rich history of traditional use and health benefits.

- Acts as a natural skin toner
- Acts as a natural cleansing agent



49291507 | 5mL bottle

LAVENDER

ESSENTIAL OIL TOP SELLER

Lavandula angustifolia

Lavender has been cherished for its unmistakable aroma and beneficial properties for thousands of years.

- Widely used for its calming and relaxing qualities
- Helps reduce anxious feelings
- Soothes occasional skin irritations
- Diffuse or apply to the bottom of the feet to promote peaceful sleep



30111507 | 15mL bottle

LEMON ESSENTIAL OIL

TOP SELLER

Citrus limon

This top-selling oil has multiple uses and benefits and is cold pressed from lemon rinds to preserve its delicate nature and potent properties.

- Cleanses and purifies the air and surfaces
- Uplifting aroma promotes a positive mood



30121507 | 15mL bottle

LEMONGRASS ESSENTIAL OIL

Cymbopogon flexuosus

Long used in Asian and Caribbean for its subtle lemony flavor and aroma, Lemongrass boasts many benefits.

- Combine with a carrier oil for a soothing massage



30131507 | 15mL bottle

LIME ESSENTIAL OIL

Citrus aurantifolia

The sharp, citrus smell of Lime makes it a must-have in any essential oils collection.

- Positively affects mood with stimulating and refreshing properties
- Used as an aromatic and topical
- Promotes emotional balance and well-being



30871507 | 15mL bottle

LITSEA ESSENTIAL OIL

Litsea cubeba

Litsea cubeba is an evergreen tree or shrub belonging to the Lauraceae family. Its fruit produces Litsea—a lemon-like essential oil with a wide range of aromatic uses.

- Diffuse for a refreshing and uplifting aroma
- Add to your homemade surface cleanser for a fresh aroma
- Used in aromatherapy and meditation for balance and inspiration
- Diffuse while working or exercising to bring fresh energy and stimulation



60202070 | 15mL bottle

MANUKA ESSENTIAL OIL

Liptospermum scoparium

Revered by the Maori people for its many invigorating properties, Manuka has been used for centuries in New Zealand for its many benefits.

- Promotes relaxation
- Cleanses and freshens the air
- Promotes the appearance of smooth, healthy skin



60202073 | 5mL bottle

MARJORAM ESSENTIAL OIL

Origanum majorana

Also known as “wintersweet” or “joy of the mountains,” Marjoram has both culinary uses and healthful benefits.

- Valued for its calming properties and positive effect on mood



30141507 | 15mL bottle

MELISSA ESSENTIAL OIL

Melissa officinalis

Our rarest oil, Melissa has a sweet, fresh, citrus-like fragrance and a wide range of beneficial properties.

- Calms tension
- Diffuse to create a relaxing environment that encourages a restful night's sleep



60200290 | 5mL bottle

MYRRH ESSENTIAL OIL

Commiphora myrrha

Used historically in many ways—from meditation to embalming—Myrrh is still frequently recommended today.

- Powerful cleansing properties
- Soothing to the skin; promotes a smooth, youthful-looking complexion
- Diffuse to help promote awareness and uplift your mood



30161507 | 15mL bottle

OREGANO ESSENTIAL OIL

TOP SELLER

Origanum vulgare

Derived from the leaves of the oregano plant, Oregano essential oil has many traditional and modern uses.

- Used as a powerful cleansing and purifying agent



30181507 | 15mL bottle

PRODUCT HIGHLIGHT

Lavender

Known for its many calming properties, Lavender is the most widely used essential oil in the world. It takes over 27KG of lavender flower tops to produce just 0.47L of essential oil.



PATCHOULI ESSENTIAL OIL

Pogostemon cablin

Patchouli is easily recognizable for its rich, musky-sweet fragrance.

- Provides a grounding, balancing effect on emotions
- Promotes a smooth, glowing complexion
- Add to your daily moisturizer to help reduce the appearance of blemishes, wrinkles, or problematic skin



30891507 | 15mL bottle

PEPPERMINT ESSENTIAL OIL

TOP SELLER

Mentha piperita

A top-selling favorite, Peppermint provides myriad health benefits.

- Repels bugs naturally
- Promotes feelings of clear airways



30191507 | 15mL bottle

PINK PEPPER ESSENTIAL OIL

Schinus molle

A sacred tree to the Incans, Pink Pepper essential oil is distilled from the fruit of the pink peppercorn tree, which was used by indigenous people as herbal solutions to health needs.

- Massage into the skin to help calm and soothe after strenuous exercise
- Diffuse or inhale directly to promote feelings of alertness



60209300 | 5mL bottle

PETITGRAIN ESSENTIAL OIL

Citrus aurantium

Petitgrain has a fresh, slightly herbaceous aroma and a variety of uses.

- Helps ease feelings of tension and promote restful sleep



60202080 | 15mL bottle

ROMAN CHAMOMILE ESSENTIAL OIL

Anthemis nobilis

The most versatile of the chamomiles, Roman Chamomile is extracted from the daisy-like flower of the Roman chamomile plant.

- Has a calming effect on the skin and mind
- Diffuse or apply to bottoms of feet at bedtime



60201085 | 5mL bottle

ROSE ESSENTIAL OIL

Rosa damascene

Known as the "Queen of Oils," Rose essential oil is highly sought after for its aroma and powerful topical and emotional benefits.

- Add to your favorite dōTERRA moisturizer to promote an even skin tone and healthy looking complexion
- Emotionally uplifting, diffuse Rose to promote feelings of happiness and vitality



60200289 | 5mL bottle

ROSEMARY ESSENTIAL OIL

Rosmarinus officinalis

Considered sacred by the ancient Greek, Roman, Egyptian, and Hebrew cultures, Rosemary has a myriad of uses.

- Helps reduce tension and occasional fatigue
- Diffuse while studying to maintain concentration

A T N

30201507 | 15mL bottle

SIBERIAN FIR ESSENTIAL OIL

Abies sibirica

With a fresh, woody scent, Siberian Fir can help balance your emotions and soothe anxious feelings.

- Provides a soothing effect when used in massage
- Apply topically to help soothe minor skin irritations

A T N

60203273 | 15mL bottle

SPEARMINT ESSENTIAL OIL

Mentha spicata

Spearmint is widely used for its benefits.

- Promotes a sense of focus and an uplifting mood

A T S

31611507 | 15mL bottle

SPIKENARD ESSENTIAL OIL

Nardostachys jatamansi

Spikenard essential oil has a woody, spicy aroma to uplift mood and promote relaxation.

- Uplifting aroma
- Promotes feelings of calmness and relaxation when diffused
- Add one or two drops to your favorite cleanser to promote healthy, glowing skin

A T N

60202071 | 5mL bottle

TANGERINE ESSENTIAL OIL

Citrus reticulata

Tangerine has a sweet, tangy aroma, similar to other citrus oils, that is uplifting. Tangerine is known for its cleansing properties.

- Cleansing and purifying
- To energize and uplift mood, place 1-2 drops in the palm of your hand, rub together, and cup over the nose and mouth for 30 seconds or diffuse throughout the room.

A T N

60202719 | 15mL bottle

TEA TREE ESSENTIAL OIL

TOP SELLER

Melaleuca alternifolia

Tea Tree oil is composed of 90 different compounds and has limitless applications.

- Renowned for its cleansing and rejuvenating effect on the skin
- Protects against environmental and seasonal threats

A T N

30151507 | 15mL bottle



PRODUCT HIGHLIGHT

Vetiver

Through dōTERRA's Cō-Impact Sourcing Initiative, our source of Vetiver essential oil comes from dedicated farmers in Haiti. Although it is strenuous work, harvesting vetiver does not provide growers with a steady stream of income throughout the year. The Cō-Impact Sourcing Initiative in Haiti aims to solve this problem by establishing fair, consistent pay for CPTG® Vetiver essential oil.

THYME ESSENTIAL OIL

Thymus vulgaris

Thyme, familiar to most as a common seasoning, produces a potent essential oil.

- Provides cleansing and purifying effects for the skin



60206102 | 15mL bottle

TURMERIC ESSENTIAL OIL

Curcuma longa

Commonly known for its Ayurvedic health uses, Turmeric is a staple for your daily routine.

- Promotes feelings of positivity when used aromatically



60208227 | 15mL bottle

VETIVER ESSENTIAL OIL

Vetiveria zizanioides

Vetiver is loved for its rich, exotic, complex aroma and is used extensively in perfumes.

- Vetiver is high in sesquiterpenes, which provide a grounding effect
- Use as part of a soothing, aromatic massage
- Use as an earthy base note in your favorite diffuser blends



30431507 | 15mL bottle

WILD ORANGE ESSENTIAL OIL

Citrus sinensis

TOP SELLER

Cold pressed from the peel, Wild Orange releases an energizing, citrusy aroma.

- Powerful cleanser and purifying agent
- Place one drop Wild Orange, Peppermint, and Frankincense in your hand. Rub hands together and inhale deeply for an energizing aroma



30171507 | 15mL bottle

WINTERGREEN ESSENTIAL OIL

Gaultheria fragrantissima

Most consumers recognize the aroma and flavor of Wintergreen from its popularity in candy and chewing gum.

- Commonly used in oral hygiene products
- Massage into hands, back, and legs for a soothing and warming sensation after exercise
- Diffuse for a sweet, uplifting aroma



31621507 | 15mL bottle

YARROW|POM ACTIVE BOTANICAL DUO

Yarrow|Pom Active Botanical Duo revitalizes the skin for a youthful looking radiance.

- Soothing to the skin



60210082 | 30mL bottle with dropper

YLANG YLANG ESSENTIAL OIL

Cananga odorata

Ylang Ylang, while famed for its exquisite fragrance, has myriad benefits.

- Blend several drops of Ylang Ylang with dōTERRA Fractionated Coconut Oil and massage into back and shoulders to help reduce the effects of daily stress
- Promotes the appearance of healthy skin and hair



30241507 | 15mL bottle



FRACTIONATED COCONUT OIL

Combine dōTERRA® Fractionated Coconut Oil with your favorite dōTERRA essential oils for your own readily absorbable blend.

- Feather-light emollient provides a soothing barrier without clogging pores
- Ideal for combining with essential oils before applying topically
- Completely soluble with all essential oils; odorless, colorless, and non-staining



31641507 | 3.8 fl oz/115mL



APPLICATION METHODS

A Can be used aromatically **T** Can be used topically

SKIN SENSITIVITY

N Can be used topically with no dilution (NEAT) **S** Dilute for young or sensitive skin (SENSITIVE) **D** Dilute before using topically (DILUTE)

dōTERRA® | FAMILY ESSENTIALS KIT



FAMILY ESSENTIALS KIT TOP SELLER

This collection of 10 nurturing essential oils and blends provides what you need to care for your family's everyday health needs with simple and safe methods featuring essential oils.

The Family Essentials Kit includes:

- Ten 5mL bottles of essential oils and blends
 - Lavender
 - Lemon
 - Peppermint
 - Tea Tree
 - Oregano
 - Frankincense
 - Deep Blue®
 - dōTERRA Easy Air™
 - ZenGest™
 - On Guard®

60205771 | Ten 5mL bottles



FRANKINCENSE ESSENTIAL OIL

One of the most precious essential oils of the ancient world, Frankincense is an essential addition to your family's oil collection. dōTERRA's exclusive Frankincense is powerfully versatile and a favorite alternative for many applications—when in doubt, use Frankincense!

- Apply to neck and forehead with Lavender and Peppermint to promote feelings of relaxation
- Use with Fractionated Coconut Oil or favorite face moisturizer for beautiful, radiant skin
- Use aromatically and topically to help lift mood and awareness

A T N



LAVENDER ESSENTIAL OIL

All Things Calming

- Diffuse or apply topically to soothe emotions
- Massage on back or bottom of feet and apply a drop to pillow at bedtime
- Apply topically to soothe skin

A T N



LEMON ESSENTIAL OIL

Clean and Freshen

- Diffuse in a room to neutralize odors and elevate mood
- Use to clean kitchen counters and stainless steel appliances

A T N



PEPPERMINT ESSENTIAL OIL

Cool and Invigorate

- Inhale deeply to invigorate lungs and increase alertness
- Add to water in a spray bottle and mist body when overheated
- Apply to neck and forehead with Lavender to promote relaxation

A T S



TEA TREE ESSENTIAL OIL

Beneficial for the Skin

- Apply to skin as part of a daily cleansing program
- Use with shampoo or conditioner for healthy-looking scalp and hair
- Apply to feet and toenails after showering, swimming, or working out

A T N



OREGANO ESSENTIAL OIL

Naturally Beneficial

- Use during changes in season or in new environment
- Dilute and apply to bottom of feet of kids and adults

A T D



DEEP BLUE® SOOTHING BLEND

Soothing and Cooling Support

- Rub on lower back muscles after a day of heavy lifting at work or during a move
- Use with a carrier oil for a cooling, comforting massage

T S



dōTERRA EASY AIR™ ESSENTIAL OIL BLEND

Cleansing and Invigorating

- Apply topically to chest to promote feelings of clear airways and easy breathing
- Diffuse or add to humidifier at bedtime for more restful sleep
- Apply to chest or bottom of feet during seasonal changes

A T S

**Easy Air™ is formerly known as Breathe in United States of America (USA)*



ZENGEST™ ESSENTIAL OIL BLEND

Travel Support

- When traveling or trying new foods, rub on stomach

A T N



ON GUARD® PROTECTIVE BLEND

Natural Defense

- Dilute in spray bottle to clean doorknobs, telephones, and other community surfaces
- Diffuse in your home or office during fall and winter months

A T S

dōTERRA TOUCH® FLORALS

Striking the proper balance between protecting sensitive skin while still delivering the benefits found in essential oils is not just a matter of science, but also of art. dōTERRA Touch has achieved that balance. Making application simple with 10mL roll-ons, dōTERRA Touch products are ideal for children, adults, and especially those with sensitive skin. You can start benefiting from essential oils immediately with these ready-to-use bottles. Enjoy the convenience and benefits of dōTERRA Touch today.



JASMINE TOUCH BLEND

dōTERRA Jasmine can not only help reduce the appearance of skin imperfections but is also uplifting to the mood.



60202985 | 10mL roll-on



PRODUCT HIGHLIGHT

Jasmine

Known as the "King of Flowers," Jasmine is prized for its delicate white flowers, which emit a highly fragrant aroma for up to 36 hours after being hand-picked. Jasmine is one of the most precious essential oils because extracting it is extremely labor intensive. The extraction process must be done at daybreak when the flowers are most fragrant and have the highest percentage of aromatic components intact.



NEROLI TOUCH BLEND

Soothing to the skin, dōTERRA Neroli Touch is specifically formulated with Fractionated Coconut Oil to provide a positive, calming experience when applied topically.



60202983 | 10mL roll-on



ROSE TOUCH BLEND

Using the powerful benefits of Rose essential oil in a convenient roll-on, dōTERRA Rose Touch can be applied throughout the day to uplift your mood or as a part of your skin care routine to promote a healthy-looking complexion.



60202969 | 10mL roll-on



dōTERRA TOUCH® KIT

Including nine of our most popular essential oils, (Lavender, Peppermint, Frankincense, Tea Tree, ZenGest, dōTERRA Easy Air, On Guard, Oregano, and Deep Blue) our dōTERRA Touch Kit is a convenient purchase for supporting the whole family's every-day needs.

21191507 | Nine 10mL roll-ons



LAVENDER TOUCH BLEND

Widely used for its calming qualities, dōTERRA Lavender Touch provides soothing comfort to the skin while promoting feelings of relaxation.



60201182 | 10mL roll-on



PEPPERMINT TOUCH BLEND

dōTERRA Peppermint Touch can be used anytime, anywhere for a quick energy boost and to experience its cleansing, cooling aroma.



31671507 | 10mL roll-on



FRANKINCENSE TOUCH BLEND

dōTERRA Frankincense Touch can be applied quickly and easily throughout the day to feel its grounding, balancing effects.



31801507 | 10mL roll-on



TEA TREE TOUCH BLEND

The perfect balance of Tea Tree essential oil and Fractionated Coconut Oil has been combined in dōTERRA Tea Tree Touch, making it ideal to use on gentle and sensitive skin.



31681507 | 10mL roll-on



ZENGEST™ TOUCH BLEND

dōTERRA ZenGest Touch is the perfect companion for road trips and to have on hand when feelings of stomach upset occur.



60215165 | 10mL roll-on



dōTERRA EASY AIR™ TOUCH BLEND

dōTERRA Easy Air Touch provides the perfect balance of dōTERRA Easy Air essential oil blend with Fractionated Coconut Oil to maintain feelings of easy airway.



60206128 | 10mL roll-on

**Easy Air is formerly known as Breathe in United States of America (USA)*



ON GUARD® TOUCH BLEND

Enjoy the unique aroma and powerful benefits of dōTERRA On Guard essential oil blend in a convenient roll-on application.



31791507 | 10mL roll-on



OREGANO TOUCH BLEND

dōTERRA Oregano Touch provides a gentle option for those with sensitive skin to receive the renowned benefits of Oregano essential oil.



31771507 | 10mL roll-on



DEEP BLUE® TOUCH BLEND

Experience the benefits of our proprietary Deep Blue essential oil blend in a gentle formula that's perfect for children and adults.



60201518 | 10mL roll-on

dōTERRA EMOTIONAL AROMATHERAPY® SYSTEM

The dōTERRA Emotional Aromatherapy System contains six unique essential oil blends that have been carefully formulated for use with a variety of changing moods. Each delicate blend contains pure essential oils that can be used aromatically or topically throughout your emotional journey. These naturally complex, fragrant blends can accompany you as you let go of burdens, find comfort and encouragement, or dream with passion again.

EMOTIONAL BLENDS USE INSTRUCTIONS:

- Use aromatically in an essential oil diffuser.
- Apply 1 or 2 drops in your palms, rub hands together, cup in front of your nose, and inhale deeply (do not touch eyes).
- Dilute and apply topically to aromatherapy touch points such as the back of the neck, the wrists, and over the heart.

dōTERRA EMOTIONAL AROMATHERAPY® KIT

21141507 | Six 5mL bottles



dōTERRA ENCOURAGE™ ESSENTIAL OIL BLEND

Are you frustrated at work? Have setbacks in spite of your best efforts shaken your confidence? Or has misplaced trust left you cynical more often than your best self should be? Then stop, reset, and restart with dōTERRA Encourage Essential Oil Blend of mint and citrus essential oils. dōTERRA Encourage will help you unleash your creative powers and find the courage that comes from believing in yourself again. Go ahead and raise the bar—you can do it!

- Combines Peppermint, Clementine, Coriander, Basil, Yuzu, Melissa, Rosemary, and Vanilla
- Promotes feelings of confidence, courage, and belief
- Counteracts negative emotions of doubt, pessimism, and cynicism



60216911 | 5mL bottle

dōTERRA CHEER® UPLIFTING BLEND

Everyone knows a bright disposition and cheerful attitude can smooth over many of the bumps and challenges of life, right? But sometimes no amount of positive self-talk is enough to avoid the blues. dōTERRA Cheer Uplifting Blend of citrus and spice essential oils provides a cheerful boost of happiness and positivity when you are feeling down. Its sunshiny, fresh, optimistic aroma will brighten any moment of your day.

- Features Wild Orange, Clove, Star Anise, Lemon Myrtle, Zdravetz, Nutmeg, Vanilla, Ginger, and Cinnamon Bark
- Promotes feelings of optimism, cheerfulness, happiness
- Counteracts negative emotions of feeling down, blue, or low



31721507 | 5mL bottle

dōTERRA PASSION® INSPIRING BLEND

Have you lost your why, your mojo, your passion? Too much of even a good thing can become predictable and boring over time. dōTERRA Passion Inspiring Blend of spice and herb essential oils will help you rekindle excitement in your life. Jump out of an airplane, dive into an ocean, or try something really scary like dancing. With dōTERRA Passion, you will find the daring to try something new, as well as discover renewed joy for the current blessings in your life.

- Merges Fractionated Coconut Oil, Cardamom, Cinnamon Bark, Ginger, Clove, Sandalwood, Jasmine, Vanilla, and Damiana
- Ignites feelings of excitement, passion, and joy
- Counteracts negative feelings of boredom and disinterest



31761507 | 5mL bottle



dōTERRA FORGIVE® RENEWING BLEND

Are you carrying a burden that grows heavier with time? Would you be better off just letting it go and facing a future unfettered by anger and guilt? When you are ready to move forward, the dōTERRA Forgive Renewing Blend of tree and herb essential oils will help you discover the liberating action of forgiving, forgetting, and moving on. Start each of your tomorrows relieved and contented with dōTERRA Forgive Renewing Blend.

- Features Spruce, Bergamot, Juniper Berry, Lemon, Myrrh, Arbovitae, Nootka Tree, Thyme, Citronella
- Promotes feelings of contentment, relief, and patience
- Counteracts negative emotions of anger and guilt



31751507 | 5mL bottle

dōTERRA CONSOLE® COMFORTING BLEND

Losing something or someone you love can be deeply disorienting and painful. Words unspoken and questions unanswered may keep you worried and unsettled. The dōTERRA Console Comforting Blend of floral and tree essential oils will help you close the door on sadness and take your first steps on a hopeful path toward emotional healing. Bind your broken heart with dōTERRA Console Comforting Blend.

- Combines Frankincense, Patchouli, Ylang Ylang, Labdanum, Amyris, Sandalwood, Rose, Osmanthus
- Promotes feelings of comfort and hope
- Counteracts negative emotions of grief, sadness, or hopelessness



31731507 | 5mL bottle

dōTERRA PEACE® REASSURING BLEND

Life is crazy right now, but things will slow down when the kids are older, right? Wrong! dōTERRA Peace Reassuring Blend of floral and mint essential oils is a positive reminder that having more stuff and doing more things won't necessarily make life happier. Slow down, take a deep breath, and reconnect with the composed, peaceful you. Everything turning out fine begins with believing it will—and a few drops of dōTERRA Peace Reassuring Blend.

- Combines Vetiver, Lavender, Ylang Ylang, Frankincense, Clary Sage, Marjoram, Labdanum, Spearmint
- Promotes feelings of peace, reassurance, and contentment
- Counteracts anxious and fearful emotions



31711507 | 5mL bottle



dōTERRA EMOTIONAL AROMATHERAPY® TOUCH

The dōTERRA Emotional Aromatherapy Touch line contains six unique essential oil blends combined with Fractionated Coconut Oil in 10 mL roll-ons for convenient and gentle topical application. These proprietary blends are formulated for use with a variety of changing moods.



EMOTIONAL AROMATHERAPY® TOUCH INSTRUCTIONS:

Each dōTERRA Emotional Aromatherapy® Touch blend can be applied to specific points on the body to elicit profound emotional responses.

- Rub dōTERRA Encourage™ Touch into your temples to set your focus for the day
- A cheerful heart is good medicine. Rub dōTERRA Cheer® Touch over your heart
- Apply dōTERRA Passion® Touch on your wrists to spark creativity, clarity, and wonder
- Rub dōTERRA Forgive® Touch over your heart to help you forgive yourself and others
- Relieve the weight of the world by massaging dōTERRA Console® Touch into your shoulders
- Give yourself peace of mind by rubbing dōTERRA Peace® Touch into your temples



dōTERRA ENCOURAGE™ TOUCH ESSENTIAL OIL BLEND

dōTERRA Encourage Touch provides gentle and quick application of dōTERRA Encourage mint and citrus essential oil blend. The fresh, minty aroma promotes feelings of confidence, courage, and belief.

- Features Fractionated Coconut Oil, Peppermint, Clementine, Coriander, Basil, Yuzu, Melissa, Rosemary, and Vanilla Bean
- Promotes feelings of confidence, courage, and belief
- Counteracts negative emotions of doubt, pessimism, and cynicism



60216912 | 10mL roll-on



dōTERRA CHEER® TOUCH UPLIFTING BLEND

dōTERRA Cheer Touch combines Fractionated Coconut Oil with the sunshiny, fresh aroma of dōTERRA Cheer essential oil blend. This convenient and gentle roll-on can be applied to the skin to counteract negative emotions and provide a boost of happiness and positivity when one is feeling down.

- Features Fractionated Coconut Oil, Lemon Myrtle, Clove, Wild Orange, Star Anise, Ginger, Zdravetz, Cinnamon Bark, Nutmeg, and Vanilla
- Promotes feelings of optimism, cheerfulness, and happiness
- Counteracts negative emotions of feeling down, blue, or low



60202084 | 10mL roll-on



dōTERRA FORGIVE® TOUCH RENEWING BLEND

dōTERRA Forgive Touch contains the tree and herb essential oils found in our proprietary dōTERRA Forgive blend along with Fractionated Coconut Oil for gentle application and ease of use. dōTERRA Forgive was developed to help you discover the liberating action of forgiving, forgetting, and moving on.

- Merges Fractionated Coconut Oil, Spruce, Bergamot, Juniper Berry, Lemon, Myrrh, Arborvitae, Nootka Tree, Thyme, and Citronella
- Promotes feelings of contentment, relief, and patience
- Counteracts negative emotions of anger and guilt



60202072 | 10mL roll-on



dōTERRA PASSION® TOUCH INSPIRING BLEND

Have you lost your why or passion for life? dōTERRA Passion Touch combines Fractionated Coconut Oil with the spice and herb blend of dōTERRA Passion to help you rekindle the excitement in your life.

- Combines Fractionated Coconut Oil, Cardamom, Cinnamon Bark, Ginger, Clove, Sandalwood, Jasmine, Vanilla, and Damiana
- Ignites feelings of excitement, passion, and joy
- Counteracts negative feelings of boredom and disinterest



60202082 | 10mL roll-on



dōTERRA CONSOLE® TOUCH COMFORTING BLEND

dōTERRA Console Touch promotes feelings of comfort and hope during times of loss. This proprietary blend combines the sweet and musky aroma of dōTERRA Console essential oil blend with Fractionated Coconut Oil for gentle application.

- Features Fractionated Coconut Oil, Frankincense Resin, Patchouli Leaf, Ylang Ylang Flower, Labdanum Flower Absolute, Amyris Bark, Sandalwood Wood, Rose Flower, Osmanthus Flower Absolute
- Promotes feelings of comfort and hope
- Counteracts negative emotions of grief, sadness, and hopelessness



60202077 | 10mL roll-on



dōTERRA PEACE® TOUCH REASSURING BLEND

In today's fast-paced society, it's easy to feel anxious, overwhelmed, and fearful—no matter what your age. Use dōTERRA Peace Touch Reassuring Blend to promote feelings of contentment, composure, and reassurance when anxious feelings overwhelm your emotions.

- Combines Fractionated Coconut Oil, Vetiver, Lavender, Ylang Ylang, Frankincense, Clary Sage, Marjoram, Labdanum, and Spearmint
- Promotes feelings of peace, reassurance, and contentment
- Counteracts anxious and fearful emotions



60202085 | 10mL roll-on



aromatouch[®] TECHNIQUE

STEP 1



STEP 2



STEP 3



STEP 4





AROMATOUCH® TECHNIQUE KIT

This kit contains eight 5 mL bottles used in the AromaTouch Technique: dōTERRA Balance® Grounding Blend, Lavender, Tea Tree, dōTERRA On Guard® Protective Blend, AromaTouch® Massage Blend, Deep Blue® Soothing Blend, Wild Orange, Peppermint, as well as the AromaTouch Technique presentation box. You will also receive dōTERRA® Fractionated Coconut Oil (3.8 fl oz) when you purchase this kit.

20571507 | Eight 5mL bottles and one 115mL bottle

The dōTERRA® AromaTouch Technique is a simple, step-by-step method of applying CPTG® essential oils topically to produce a profound overall wellness experience.

Increase the benefits you experience with CPTG® essential oils by incorporating the AromaTouch Technique into your healthy lifestyle philosophy. Equally compelling to novice users and licensed professionals, the AromaTouch Technique represents an exciting new era of essential oil application and benefits.



"I love doing the AromaTouch Technique on moms and dads so they can learn how to do the same for their families. It is a win-win situation."

Peggy S., Utah, USA

Proprietary ESSENTIAL OIL BLENDS

dōTERRA® essential oil blends are proprietary formulas for targeted wellness applications. They represent the converging wisdom of many years of essential oil experience and validation of a growing body of research and scientific study. Harnessing the inherent living energies of plants, each formula is synergistically balanced to enhance product potency and benefits and contains only CPTG® essential oils.

ADAPTIV™

CALMING BLEND

When feelings of fatigue, restlessness, indecisiveness, or irritability appear, Adaptiv Calming Blend is part of the toolbox that will help create a sense of balance.

- Wild Orange, Lavender, Copaiba, Spearmint, Magnolia, Rosemary, Neroli, and Sweetgum
- Assists in centering
- Increases feelings of tranquility



60209932 | 15mL bottle

ADAPTIV™ TOUCH

CALMING BLEND

Adaptiv Touch helps to reduce feelings of anxiousness and tension, while providing comfort in new surroundings or situations. Use on the go to help create a sense of balance.

- A blend of Wild Orange, Lavender, Copaiba, Spearmint, Magnolia, Rosemary, Neroli, and Sweetgum in a base of Fractionated Coconut Oil
- Soothes and uplifts
- Encourages relaxation



60209931 | 10mL roll-on

AROMATOUCH®

MASSAGE BLEND

This proprietary massage blend combines the benefits of oils well known for their soothing and relaxing effects.

- Features Basil, Grapefruit, Cypress, Marjoram, Peppermint, and Lavender
- Promotes feelings of relaxation and lessens feelings of tension
- Add to Epsom salts and enjoy soaking in a hot bath



31201507 | 15mL bottle



ESSENTIAL OIL BLENDS

Quick Reference Chart

	APPLICATION		SKIN SENSITIVITY			SKU
	AROMATIC	TOPICAL	NEAT	SENSITIVE	DILUTE	
ADAPTIV™ Calming Blend	A	T	N			60209932
Wild Orange, Lavender, Copaiba, Spearmint, Magnolia, Rosemary, Neroli, Sweetgum						
ADAPTIV™ TOUCH Calming Blend	A	T	N			60209931
Wild Orange, Lavender, Copaiba, Spearmint, Magnolia, Rosemary, Neroli, Sweetgum, Fractionated Coconut Oil						
AROMATOUGH® Massage Blend		T	N			31201507
Cypress, Peppermint, Marjoram, Basil, Grapefruit, Lavender						
dōTERRA BALANCE® Grounding Blend	A	T	N			31011507
Fractionated Coconut Oil, Spruce, Ho Wood, Frankincense, Blue Tansy, Blue Chamomile, Osmanthus Absolute						
CITRUS BLISS® Invigorating Blend	A	T	N			31021507
Wild Orange, Lemon, Grapefruit, Mandarin, Bergamot, Tangerine, Clementine, with Vanilla Absolute						
CLARYCALM® Monthly Blend for Women	A	T	N			60201098
Clary Sage, Lavender, Bergamot, Roman Chamomile, Ylang Ylang, Cedarwood, Geranium, Fennel, Carrot Seed, Palmarosa, Vitex						
CLEARIFY™ Essential Oil Blend	A		N			60206101
Litsea, Tangerine, Grapefruit, Frankincense, Cardamom						
DDR PRIME® Cellular Complex	A	T		S		60209216
Frankincense, Wild Orange, Litsea, Thyme, Clove, Summer Savory, Niaouli, Lemongrass						
DEEP BLUE® Soothing Blend TOP SELLER		T		S		31051507
Wintergreen, Camphor, Peppermint, Ylang Ylang, Helichrysum, Blue Tansy, Blue Chamomile, Osmanthus Extract						
ZENGEST™ Essential Oil Blend	A	T	N			60215163
Star Anise, Peppermint, Ginger, Caraway, Coriander, Cardamom, Fennel						
dōTERRA EASY AIR™ Essential Oil Blend	A	T		S		60206126
Laurel Leaf, Eucalyptus, Peppermint, Tea Tree, Lemon, Cardamom, Ravintsara, Ravensara						
ELEVATION® Joyful Blend	A	T	N			31041507
Lavandin, Tangerine, Lavender, Amyris, Clary Sage, Hawaiian Sandalwood, Ylang Ylang, Ho Wood, Osmanthus Absolute, Lemon Myrtle, Melissa						
dōTERRA HD CLEAR® Topical Blend		T	N			60201149
Black Cumin Seed Oil, Ho Wood, Tea Tree, Eucalyptus, Geranium, Litsea						
dōTERRA IMMORTELLE® Anti-Aging Blend		T	N			60204469
Frankincense, Sandalwood, Lavender, Myrrh, Helichrysum, Rose						
INTUNE® Focus Blend	A	T	N			60201144
Amyris, Patchouli, Frankincense, Lime, Ylang Ylang, Hawaiian Sandalwood, Roman Chamomile						
dōTERRA LAVENDER PEACE® Restful Blend	A	T	N			60200880
Lavender, Sweet Marjoram, Roman Chamomile, Ylang Ylang, Vetiver, Cedarwood, Ho Wood, Hawaiian Sandalwood with Vanilla Absolute						
ON GUARD® Protective Blend TOP SELLER	A	T	S			31011507
Wild Orange, Clove, Cinnamon, Eucalyptus, Rosemary						
PASTTENSE® Essential Oil Blend	A	T	N			60201128
Wintergreen, Lavender, Peppermint, Frankincense, Cilantro, Marjoram, Roman Chamomile, Basil, Rosemary						

APPLICATION METHODS

A Can be used aromatically T Can be used topically

SKIN SENSITIVITY

N Can be used topically with no dilution (NEAT) S Dilute for young or sensitive skin (SENSITIVE) D Dilute before using topically (DILUTE)

ESSENTIAL OIL BLENDS

Quick Reference Chart Continued

	APPLICATION		SKIN SENSITIVITY			SKU
	AROMATIC	TOPICAL	NEAT	SENSITIVE	DILUTE	
dōTERRA PURIFY® Refreshing Blend <i>Lemon, Siberian Fir, Citronella, Lime, Tea Tree, Cilantro</i>	A	T	N			31061507
SMART & SASSY® Essential Oil Blend TOP SELLER <i>Grapefruit, Lemon, Peppermint, Ginger, Cinnamon</i>	A	T		S		31371507
TERRASHIELD® Essential Oil Blend NEW FORMULA <i>Sesame Seed Oil, Java Citronella, Lemongrass, Thyme, Cedarwood, Geranium, Peppermint</i>	A	T	N			60215942
dōTERRA WHISPER® Blend for Women <i>Fractionated Coconut Oil, Patchouli, Bergamot, Hawaiian Sandalwood, Rose Absolute, Vanilla Absolute, Jasmine Absolute, Cinnamon Bark, Vetiver, Labdanum Absolute, Cocoa Absolute, Ylang Ylang</i>	A	T	N			60205948
dōTERRA WHISPER® TOUCH Blend for Women COMING SOON <i>Fractionated Coconut Oil, Patchouli, Bergamot, Sandalwood, Rose Absolute, Vanilla Absolute, Jasmine Absolute, Cinnamon Bark, Vetiver, Labdanum Absolute, Cocoa Absolute, Ylang Ylang</i>	A	T	N			60215170
ZENDO™ Essential Oil Blend <i>Tangerine, Rosemary, Geranium, Juniper Berry, Cilantro</i>	A	T	N			60210819

EMOTIONAL AROMATHERAPY OIL BLENDS

dōTERRA ENCOURAGE™ Essential Oil Blend <i>Peppermint, Clementine, Coriander, Basil, Yuzu, Melissa, Rosemary, Vanilla Absolute</i>	A	T		S		60216911
dōTERRA CHEER® Uplifting Blend <i>Wild Orange, Clove, Star Anise, Lemon Myrtle, Nutmeg, Vanilla Absolute, Ginger, Cinnamon Bark, Zdravetz</i>	A	T		S		31721507
dōTERRA PASSION® Inspiring Blend <i>Fractionated Coconut Oil, Cardamom, Cinnamon Bark, Ginger, Clove, Sandalwood, Jasmine Absolute, Vanilla Absolute, Damiana</i>	A	T		S		31761507
dōTERRA FORGIVE® Renewing Blend <i>Spruce, Bergamot, Juniper Berry, Lemon, Myrrh, Arborvitae, Nootka Tree, Thyme, Citronella</i>	A	T		S		31751507
dōTERRA CONSOLE® Comforting Blend <i>Frankincense, Patchouli, Ylang Ylang, Labdanum Absolute, Amyris, Sandalwood, Rose, Osmanthus Extract</i>	A	T	N			31731507
dōTERRA PEACE® Reassuring Blend <i>Vetiver, Lavender, Ylang Ylang, Frankincense, Clary Sage, Marjoram, Labdanum Absolute, Spearmint</i>	A	T	N			31711507

dōTERRA KIDS COLLECTION

dōTERRA BRAVE™ Courage Blend <i>Fractionated Coconut Oil, Wild Orange, Amyris, Osmanthus Extract, Cinnamon</i>	A	T	N			60208136
dōTERRA TAMER™ Essential Oil Blend <i>Fractionated Coconut Oil, Spearmint, Japanese Peppermint, Ginger, Black Pepper, Parsley Seed</i>	A	T	N			60211059
dōTERRA RESCUER™ Soothing Blend <i>Fractionated Coconut Oil, Copaiba, Lavender, Spearmint, Zanthoxylum</i>	A	T	N			60208138

APPLICATION METHODS

A Can be used aromatically T Can be used topically

SKIN SENSITIVITY

N Can be used topically with no dilution (NEAT) S Dilute for young or sensitive skin (SENSITIVE) D Dilute before using topically (DILUTE)



"ZenGest is my life-saving oil! When I don't get enough sleep, my stomach cramps up. I don't sleep well when my husband is gone, and he works on a rotation where he is away as much or more than he is home. ZenGest is the oil I use very regularly to help calm my stomach during those long weeks when he is gone."

Jennifer B., Eagle River, Alaska

doTERRA BALANCE® GROUNDING BLEND

Balance Grounding Blend has a warm, woody aroma that creates a sense of calmness and well-being.

- Features Spruce, Ho Wood, Frankincense, Blue Tansy, Blue Chamomile, and Osmanthus
- Promotes an overall sense of relaxation
- Evokes feelings of tranquility and balance
- Helps ease anxious feelings

A T N

31011507 | 15mL bottle

CITRUS BLISS® INVIGORATING BLEND

The harmonious blend of Citrus Bliss combines the powerful benefits of popular citrus essential oils.

- Merges Wild Orange, Lemon, Grapefruit, Mandarin, Bergamot, Tangerine, and Clementine with a hint of vanilla
- Helps reduce stress
- Positively affects mood with energizing, uplifting, and refreshing properties
- Cleanses and purifies the air

A T N

31021507 | 15mL bottle

CLARYCALM® MONTHLY BLEND FOR WOMEN

ClaryCalm is a unique blend of essential oils developed especially for women.

- Features a blend of Clary Sage, Lavender, Bergamot, Roman Chamomile, Ylang Ylang, Cedarwood, Geranium, Fennel, Palmarosa, Carrot Seed, and Vitex
- Provides a cooling and calming effect
- Helps soothe heightened emotions

A T N

60201098 | 10mL roll-on

CLEARIFY™ ESSENTIAL OIL BLEND

Clearify is an aromatic blend of essential oils combined to provide fresh energy to your day.

- Has a calming, yet uplifting aroma
- Refreshes your home or office throughout the day
- Useful throughout the day when taking a moment to breathe

A N

60206101 | 15mL bottle

**DDR PRIME®****CELLULAR COMPLEX**

DDR Prime is a proprietary blend of CPTG® essential oils that helps protect the body.

- Combines Frankincense, Wild Orange, Litsea, Thyme, Clove, Summer Savory, Niaouli, and Lemongrass



60209216 | 15mL bottle

DEEP BLUE® TOP SELLER
SOOTHING BLEND

Deep Blue provides soothing effects that can be felt immediately.

- Features Wintergreen, Camphor, Peppermint, Blue Tansy, Blue Chamomile, Helichrysum, and Osmanthus
- Rub Deep Blue on lower back muscles after a day of heavy lifting
- Apply on feet and knees before and after exercise
- Massage Deep Blue with a few drops of carrier oil onto growing kids' legs before bedtime



31051507 | 5mL bottle

60201170 | 10mL roll-on

ZENGEST™
ESSENTIAL OIL BLEND

The well-recognized essential oils in ZenGest are known for providing digestive benefits.

- Features a proprietary blend of Star Anise, Peppermint, Ginger, Caraway, Coriander, Cardamom, and Fennel
- Helps to comfort your stomach



60215163 | 15mL bottle

dōTERRA EASY AIR™
ESSENTIAL OIL BLEND

Easy Air Essential Oil Blend is a powerful essential oil blend that maintains feelings of clear airways and easy breathing.

- Merges Laurel Leaf, Eucalyptus, Peppermint, Tea Tree, Lemon, Cardamom, Ravintsara, and Ravensara
- Maintains feelings of clear airways and easy breathing
- Helps minimize the effects of seasonal threats
- Diffuse or inhale directly when environmental threats are high



60206126 | 15mL bottle

**Easy Air™ is formerly known as Breathe in United States of America (USA)*

ELEVATION®
JOYFUL BLEND

Elevation is a proprietary blend of mood-elevating essential oils.

- Features Lavandin, Tangerine, Lavender, Amyris, Clary Sage, Hawaiian Sandalwood, Ylang Ylang, Ho Wood, Osmanthus, Lemon Myrtle, and Melissa
- Elevates mood and promotes vitality
- Helps create a positive and energizing mood



31041507 | 15mL bottle

dōTERRA HD CLEAR®
TOPICAL BLEND

Used as a spot treatment or an over-all application, HD Clear Topical Blend promotes a clean complexion with essential oils renowned for their skin-benefitting properties.

- Features a unique blend of black cumin seed oil as well as CPTG® essential oils of Ho Wood, Tea Tree, Eucalyptus, Geranium, and Litsea
- Promotes a clear complexion
- Helps reduce breakouts



60201149 | 10mL roll-on

APPLICATION METHODS

A Can be used aromatically T Can be used topically

SKIN SENSITIVITY

N Can be used topically with no dilution (NEAT) S Dilute for young or sensitive skin (SENSITIVE) D Dilute before using topically (DILUTE)

dōTERRA IMMORTELLE® ANTI-AGING BLEND

This powerful blend of essential oils nourishes and supports skin to help sustain smoother, more radiant, and youthful-looking skin.

- Features the renewing power of rare essential oils—Frankincense, Sandalwood, Lavender, Myrrh, Helichrysum, and Rose
- Helps reduce the appearance of fine lines and wrinkles
- Helps reduce contributing factors to the appearance of aging skin



60204469 | 10mL roll-on

INTUNE® FOCUS BLEND

InTune is a proprietary blend of carefully selected essential oils known to promote a sense of clarity and focus.

- Features Amyris, Patchouli, Frankincense, Lime, Ylang Ylang, Hawaiian Sandalwood, and Roman Chamomile
- Enhances and sustains a sense of focus
- Supports efforts of those who have difficulty paying attention and staying on task



60201144 | 10mL roll-on

dōTERRA LAVENDER PEACE® RESTFUL BLEND

The reformulated Lavender Peace Restful Blend combines essential oils renowned for its ability to lessen feelings of tension and calm emotions, and support a restful sleep when used aromatically.

- Features Lavender, Cedarwood, Ho Wood, Ylang Ylang, Sweet Marjoram, Roman Chamomile, Vetiver, Vanilla Bean and Hawaiian Sandalwood
- Promotes relaxation and a restful sleeping environment
- Lessens feelings of tension and calms emotions
- Calms the mind and soothes the senses



60200880 | 15mL bottle

ON GUARD® PROTECTIVE BLEND

On Guard offers a fragrant, natural, effective defenses.

- Features a combination of Wild Orange, Clove, Cinnamon, Eucalyptus, and Rosemary
- Protects against environmental threats
- Safe for use on countertops, as a non-toxic cleaner, or to purify the air through diffusion



31101507 | 15mL bottle

PASTTENSE® ESSENTIAL OIL BLEND

PastTense is a distinctive blend of essential oils known to reduce the feelings associated with tension and stress.

- Features Wintergreen, Lavender, Peppermint, Frankincense, Cilantro, Marjoram, Roman Chamomile, Basil, and Rosemary
- Helps ease stressful feelings
- Helps calm emotions
- Packaged for convenient application in a roll-on bottle



60201128 | 10mL roll-on

dōTERRA PURIFY® REFRESHING BLEND

Purify is designed to eliminate odors naturally without toxic additives.

- Combines Lemon, Siberian Fir, Citronella, Lime, Tea Tree, and Cilantro
- Refreshing aroma eradicates unpleasant odors and clears the air
- Protects against environmental threats



31061507 | 15mL bottle

SMART & SASSY® TOP SELLER ESSENTIAL OIL BLEND

Support a positive mood with the proprietary essential oil blend of Smart & Sassy.

- Formulated with Grapefruit, Lemon, Peppermint, Ginger, and Cinnamon
- Diffuse for an energy boost



31371507 | 15mL bottle

**Smart & Sassy is formerly known as Slim & Sassy in United States of America (USA)*



TERRASHIELD® NEW FORMULA
ESSENTIAL OIL BLEND

Just a small amount of super-concentrated TerraShield® provides powerful outdoor protection.

- Features Sesame Seed Oil, Java Citronella, Lemongrass, Thyme, Cedarwood, Geranium, Peppermint
- Diffuse during outdoor events
- Apply before hiking or camping


60215942 | 15mL bottle

60215943 | 30mL spray bottle COMING SOON
dōTERRA WHISPER®
BLEND FOR WOMEN

Create a beautiful and unique personal fragrance with the essences of the most appealing CPTG® essential oils.

- Contains Patchouli, Bergamot, Hawaiian Sandalwood, Rose Absolute, Vanilla Absolute, Jasmine Absolute, Cinnamon, Cocoa Extract, Labdanum, Vetiver, Ylang Ylang
- Warming aroma that entices the senses
- Promotes calming emotions throughout the day


60205948 | 5mL bottle

dōTERRA WHISPER® TOUCH
COMING SOON
BLEND FOR WOMEN

dōTERRA Whisper Touch Blend for Women is a complex and rich blend that combines with each individual's chemistry to create a uniquely personal fragrance.

- Contains Patchouli, Bergamot, Sandalwood, Vanilla Extract, Rose Absolute, Jasmine Absolute, Cinnamon Bark, Vetiver, Labdanum, Cocoa Absolute, Ylang Ylang in a base of Fractionated Coconut Oil
- Combines with each individual's chemistry to create a beautiful, unique, and personal fragrance.
- Provides a warming, musky aroma.


60215170 | 10mL roll-on

ZENDO™
ESSENTIAL OIL BLEND

Zendo essential oil blend has purifying properties.

- Features Tangerine, Rosemary, Geranium, Juniper Berry, and Cilantro
- Provides a cleansing effect


60210819 | 15mL bottle

dōTERRA BRAVE™
COURAGE BLEND

Before new or different situations, or just to start your day, roll dōTERRA Brave onto the back of neck, tummy, or bottoms of feet for a boost of courage and confidence.

- Features Wild Orange, Amyris, Osmanthus Extract, and Cinnamon in a base of Fractionated Coconut Oil
- Instills courage and positivity
- Combine with positive daily affirmations to promote belief in oneself


60208136 | 10mL roll-on

dōTERRA TAMER™
ESSENTIAL OIL BLEND

Before or after meals, or when your tummy feels troubled, roll dōTERRA Tamer on your tummy for a soothing sensation and calming aroma.

- Features Spearmint, Japanese Peppermint, Ginger, Black Pepper, and Parsley Seed in a base of Fractionated Coconut Oil
- Calms and soothes the feelings of an upset tummy
- An essential for road trips


60211059 | 10mL roll-on

dōTERRA RESCUER™
SOOTHING BLEND

After running, jumping, and playing, rub Rescuer, onto your legs, feet, or back to soothe your active body.

- Use as part of a tension-relieving massage
- Comforting and soothing to the skin
- Creates a cooling experience when applied topically


60208138 | 10mL roll-on


DIFFUSERS

Having a stylish and efficient diffuser is key to creating the perfect environment, whether at home or the office. Transform your world with a dōTERRA diffuser just right for any situation and décor.



dōTERRA LUMO™ DIFFUSER

Influenced by nature, the Lumo Diffuser features a maple wood base and several light settings inspired by natural elements. Transform any room into a serene or uplifting environment by diffusing CPTG® essential oils with a custom-designed, nature-inspired, ultrasonic diffuser.

- Customizable output—2 to 5 hrs continuous/10 hrs intermittent (5 min. on/5 min. off)
- Ultrasonic technology
- Seven lighting color options
- Maple wood base
- Coverage of up to 540 square feet

60205787



PETAL DIFFUSER

The Petal Diffuser is a small, user friendly diffuser that delivers aromatic benefits to your family and home. It has a relaxing mist and soft white ambient light, making it ideal for nighttime diffusion, and can cover up to 330 square feet. The Petal Diffuser has three timed settings—2 or 6 hours continuous, and 12 hours intermittent—allowing you to customize the release of essential oils into the air.

- Customizable output and light settings

60209231

Quick and Effective CORRECT-X®

Frankincense, Helichrysum, Tea Tree, Cedarwood, and Lavender—all CPTG® essential oils—form the base of dōTERRA Correct-X. This multi-purpose, natural ointment helps soothe your skin and keep it clean while recovering from distress. Correct-X provides a moisture barrier that helps protect while simultaneously soothing and hydrating the skin. This petroleum-free and preservative-free ointment is ideal for sensitive skin due to its quick absorption and non-irritating nature.



CORRECT-X® ESSENTIAL OIL OINTMENT

Correct-X is a natural topical ointment using powerful CPTG® essential oils that assist in soothing skin.

- Helps soothe while simultaneously hydrating
- Absorbs quickly and is gentle and non-irritating, making it ideal for sensitive skin
- Keeps skin clean while recovering from distress
- Keep on hand, when taking children to playground, sporting events, or camping

60200881 | 0.5 oz/15mL

Play longer and harder with **DEEP BLUE®**

The soothing combination of CPTG® essential oils of Wintergreen, Camphor, Peppermint, Ylang Ylang, Helichrysum, Blue Tansy, Blue Chamomile, and Osmanthus create the dōTERRA Deep Blue® proprietary blend, available in a cream, 5mL, and roll-on.

DEEP BLUE® SOOTHING BLEND

Deep Blue provides soothing effects that can be felt immediately.

- Rub Deep Blue on lower back after a day of heavy lifting
- Apply on feet and knees before and after exercise
- Massage Deep Blue with a few drops of carrier oil onto growing kids' legs before bedtime

31051507 | 5mL bottle T S

60201170 | 10mL roll-on T S

60201518 | 10mL Touch A T N

DEEP BLUE® RUB SOOTHING LOTION

Infused with Deep Blue Soothing Blend, Deep Blue Rub provides a soothing and cooling effect.

- Formulated with the Deep Blue proprietary blend of essential oils and other powerful ingredients
- Perfect for the athlete in your life, Deep Blue Rub is blended in a base of moisturizing emollients that leave your skin soft and non-greasy
- Provides a cooling and soothing sensation to targeted areas

38901507 | 4 oz/120mL



dōTERRA EASY AIR®

Deep breathing is cleansing, freeing, and invigorating. It elevates our minds and energizes our bodies. It is the essence of life, the reassurance of vitality. The remarkable blend of essential oils found in the dōTERRA Easy Air Essential Oil Blend can maintain the feelings of clear airways and easy breathing, especially when seasonal impediments to breathing are high.

EASY AIR™ ESSENTIAL OIL BLEND

Easy Air Essential Oil Blend is a powerful essential oil blend that maintains feelings of clear airways and easy breathing.

- Merges Laurel Leaf, Eucalyptus, Peppermint, Tea Tree, Lemon, Cardamom, Ravintsara, and Ravensara
- Maintains feelings of clear airways and easy breathing
- Helps minimize the effects of seasonal threats

60206126 | 15mL bottle A T S

60206128 | 10mL Touch A T N



EASY AIR HARD CANDY

dōTERRA Easy Air is a long-trusted essential oil blend and has helped many with oils such as Lemon, Peppermint, Eucalyptus, and now Cardamom.

- Maintains clear airways and breathing
- Calms the senses

60208717 | 30 candies



YARROW|POM

The synergy of Yarrow essential oil and cold-pressed Pomegranate seed oil sets the new standard for health, vitality, and radiant skin. Yarrow essential oil and Pomegranate seed oil are the foundation of the dōTERRA Yarrow|Pom Active Botanical Duo and Yarrow|Pom Body Renewal Serum.

YARROW|POM ACTIVE BOTANICAL DUO

Yarrow|Pom Active Botanical Duo revitalizes the skin for a youthful looking radiance.

- Soothing to the skin



60210082 | 30mL bottle with dropper



YARROW|POM BODY RENEWAL SERUM

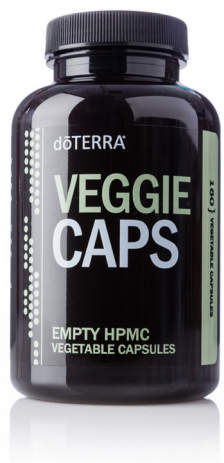
Yarrow|Pom Body Renewal Serum is a skin-loving, luxuriously silky serum packed with powerful bioactive compounds and skin-protecting proteins for the ultimate indulgence in topical skincare and beauty.

- Yarrow essential oil revitalizes aging skin and promotes the look of young and healthy skin
- Pomegranate Seed Oil is rich in punicic acid and supports the skin's natural barrier
- Pomegranate esters help promote the appearance of bright, smooth, even skin



60211266 | 3.4 fl oz/100mL

WELLNESS



VEGGIE CAPS

Made specifically for you to customize your dietary supplement needs, Veggie Caps provide a convenient and healthy way to take dietary ingredients orally.

Features:

- Free of preservatives, gelatin, wheat, sugar, starch, dairy, and animal products
- Made of inert vegetable ingredients that do not interfere with digestion
- Includes 160 HPMC capsules

60209492 | 160 HPMC capsules



GINGER-LEMON HARD CANDY COMING SOON

dōTERRA Ginger-Lemon Hard Candy are a convenient way to support digestion and ease occasional stomach discomfort.

- Sweet, spicy ginger-lemon flavor
- Supports healthy digestion

60213070 | 30 candies



dōTERRA TERRAMIX FB

dōTERRA TerraMix FB is a fiber-rich beverage contains natural apple fiber, tapioca fiber, and ground flaxseeds, and can be mixed with warm or cold water to make a delicious fiber-rich drink.

- Good source of fiber
- Rich in soluble and insoluble fiber
- Contains high potency (200mg) vitamin C

SINGLE

60212335 | 276g

TWIN PACK

60218057 | Two 276g



Protect yourself with ON GUARD®

On Guard® is one of the most popular and versatile dōTERRA® CPTG® essential oil blends. The proprietary combination of Wild Orange, Clove, Cinnamon, Eucalyptus, and Rosemary essential oils is an active component in a first line of defense. The On Guard® Protective Blend has been integrated into a variety of dōTERRA products to provide diverse ways to use its powerful benefits.



ON GUARD® TOP SELLER PROTECTIVE BLEND

On Guard offers a fragrant, natural, effective defense.

- Features a combination of Wild Orange, Clove, Cinnamon, Eucalyptus, and Rosemary
- Protects against environmental threats
- Safe for use on countertops, as a non-toxic cleaner, or to purify the air through diffusion



31101507 | 15mL bottle

ON GUARD® FOAMING HAND WASH

Keep your hands clean and protected with the power of On Guard essential oil blend.

- Conveniently packaged in a 16-ounce bottle that fills 8-ounce foaming dispensers
- Formulated with the unique On Guard Protective Blend
- Non-toxic and environmentally safe

SINGLE

60206119 | 16 fl oz/473mL Hand Wash

TWIN PACK

60208705 | Two 16 fl oz/473mL Hand Wash



ON GUARD® HAND WASH DISPENSER

38030000 | 8 oz



ON GUARD® NATURAL WHITENING TOOTHPASTE

Clean teeth gently with the added benefit of On Guard essential oil blend.

- Fluoride-free
- Unique cinnamon-mint flavor mixed with xylitol for fresh and clean breath
- Boasts the protective benefits of On Guard essential oil blend
- Whitens teeth with gentle polishing agents

38911507 | 4 oz



ON GUARD® CLEANER CONCENTRATE

The ideal cleaner, On Guard Concentrate is fortified with On Guard Protective Blend.

- Features a non-toxic formula safe for the entire family
- Combines plant-based derivatives with the powerful On Guard Protective Blend
- Perfect for hard surface cleaning needs with exceptional results
- Leaves behind a clean, invigorating scent

SINGLE

38141507 | 12 fl oz/355mL

TWIN PACK

60208704 | Two 12 fl oz/355mL



ON GUARD® LAUNDRY DETERGENT

dōTERRA On Guard Laundry Detergent is a naturally based, highly concentrated 6X laundry detergent that utilizes the power of dōTERRA On Guard Protective Blend and bio-originated enzymes for amazingly clean clothes.

- Helps rid environmental threats from each load of laundry to keep your family safe and your clothes fresh and clean
- 64 loads in each bottle; 1 tablespoon = 1 load (using a high-efficiency washer)
- Great as a pre-treatment for stains

SINGLE

60206009 | 32 fl oz/947mL

TWIN PACK

60211948 | Two 32 fl oz/947mL



ON GUARD® HARD CANDY

dōTERRA On Guard Hard Candy are a convenient way to receive the benefits of dōTERRA On Guard proprietary essential oil blend in an all-natural throat drop.

- Helps calm and soothe dry, scratchy throats
- Proprietary dōTERRA On Guard Hard Candy blend of CPTG Certified Pure Therapeutic Grade essential oils including Wild Orange, Clove, Cinnamon, Eucalyptus, Rosemary, and Myrrh in the convenience of an individually-wrapped drop
- Blended in a sweet base of organic cane sugar and organic brown rice syrup, with no added artificial flavors or colors

34051607 | 30 candies



Healthy, radiant skin with dōTERRA® VERÀGE®

dōTERRA® Veràge® is an exclusive collection of natural skin care products that nourish your skin, helping to reduce the visible signs of aging while also promoting smooth, supple skin. The advanced plant technology used in Veràge® promotes an optimal lipid balance—the same balance found in healthy, youthful-looking skin. Each product is composed of true gifts from the Earth: nourishing plant extracts, pure and potent essential oils, and select natural ingredients. The Veràge® Skin Care Collection delivers benefits your skin will love, naturally.

CLINICALLY SUPPORTED BENEFITS OF THE VERÀGE® INGREDIENTS

- Smooths skin texture
- Reduces appearance of wrinkles
- Minimizes the appearance of mechanical creasing
- Minimizes pore appearance
- Evens tone

VERÀGE® CLEANSER

Healthy, smooth skin begins with Veràge Cleanser. This natural gel cleanser purifies skin for a fresh, youthful-looking complexion.

- Infused with CPTG® essential oils of Wild Orange, Tea Tree, and Basil to gently cleanse and lift away impurities
- Invigorates and cleanses skin while natural emollients nourish and hydrate

60210624 | 2 fl oz/60mL

VERÀGE® TONER

Veràge Toner combines CPTG® essential oils with nourishing plant extracts to promote the appearance of tightened, toned, and smooth skin—anytime, anywhere. This hydrating toner fortifies and refreshes the skin while invigorating the senses for an energizing boost and a glowing complexion.

- CPTG® essential oils of Ylang Ylang, Palmarosa, Cypress, and Coriander tone and balance skin
- Nourishing plant extracts provide targeted moisture and toning to help skin look its best
- Easy mist application

37391507 | 1.7 fl oz/50mL

VERÀGE® IMMORTELLE HYDRATING SERUM

Experience the age-defying effects of Veràge Immortelle Hydrating Serum. This powerful formula combines CPTG® essential oils with plant extracts for smoother, more youthful-looking skin.

- Utilizes the CPTG® essential oils found in the popular Immortelle blend for radiant skin
- Provides optimal lipid balance for smoother, more youthful-looking skin

37401507 | .5 fl oz/15mL

VERÀGE® MOISTURIZER

Veràge Moisturizer combines CPTG® essential oils with plant extracts for natural hydration and skin nourishment. This light, non-greasy moisturizer absorbs quickly but hydrates deeply, helping reduce the appearance of fine lines and wrinkles for a smooth, even complexion.

- Formulated with CPTG® essential oils of Juniper Berry, Jasmine, Sea Buckthorn Berry, and Geranium—all known to revitalize the skin
- Uses natural ingredients to hydrate skin, helping reduce the appearance of fine lines and wrinkles

37411507 | 1 fl oz/30mL

VERÀGE® SKIN CARE COLLECTION

A collection that brings together Veràge Cleanser, Toner, Immortelle Hydrating Serum, and Moisturizer for beautiful, healthy-looking skin.

60200350



Clear, smooth skin starts with dōTERRA® HD CLEAR®

dōTERRA HD Clear® is a line of natural and highly effective products that address problem skin at its core. This three-step system works synergistically to purge skin of impurities, promote a smooth, clear complexion, and help reduce the appearance of blemishes. Included in each formula are CPTG® essential oils along with specialized plant extracts proven to improve skin texture and appearance. Using dōTERRA HD Clear® every day will result in a clear, smooth, healthy-looking complexion.



dōTERRA HD CLEAR® FOAMING FACE WASH

Discover the perfect solution for problem skin of all ages with the dōTERRA® HD Clear Foaming Face Wash.

- Designed to thoroughly cleanse without stripping away natural moisture
- Contains CPTG® essential oils and plant extracts that will leave your skin extra clean and soft

49421507 | 1.7 fl oz/50mL

dōTERRA HD CLEAR® TOPICAL BLEND

Used as a spot treatment or an over-all application, HD Clear Topical Blend promotes a clean and healthy-looking complexion with essential oils renowned for their skin-benefiting properties.

- Features a unique blend of Black Cumin seed oil as well as CPTG® essential oils of Ho Wood, Tea Tree, Eucalyptus, Geranium, and Litsea
- Promotes clear, smooth skin by targeting the site of blemishes



60201149 | 10mL roll-on

dōTERRA HD CLEAR® FACIAL LOTION

Enjoy a beautiful, smooth complexion with HD Clear Facial Lotion. This lotion contains natural emollients to promote healthy levels of moisture in the skin for a balanced complexion as well as CPTG® essential oils combined with botanical extracts known to assist in achieving blemish-free skin.

- Features a unique blend of Black Cumin seed oil as well as CPTG® essential oils of Ho Wood, Tea Tree, Eucalyptus, Geranium, and Litsea
- Promotes clear complexion
- Soothes skin

49411507 | 1.7 fl oz/50mL

Keep your skin looking radiant with dōTERRA® ESSENTIAL SKIN CARE

dōTERRA Essential Skin Care is a family of skin care products designed to keep your skin feeling and looking young, healthy, and gorgeous by maximizing the natural power of carefully selected CPTG® essential oils combined with cutting-edge ingredient technologies and natural extracts in each product. Target the visible signs of aging and prevent future signs of aging with dōTERRA Essential Skin Care.



FACIAL CLEANSER

dōTERRA Facial Cleanser contains CPTG® essential oils of Tea Tree and Peppermint, known for their ability to purify and tone skin and support a healthy complexion. Natural cleansers of Yucca Root Extract and Soapbark Extract gently wash away impurities leaving skin looking clean, fresh, and smooth.

- Yucca Root Extract and Soapbark Extract are rich in saponins, natural cleansers that clarify and soothe skin
- Macadamia seed oil conditions the skin
- Vitamin E supports healthy-looking skin

60203237 | 4 fl oz/118mL

INVIGORATING SCRUB

Experience fresh, renewed skin with dōTERRA Invigorating Scrub. Grapefruit and Peppermint CPTG® essential oils make exfoliating a refreshing aromatic experience while jojoba esters polish your skin. Botanicals of Mandarin Orange Extract, Jasmine Extract, and Greater Burdock Extract tone, smooth, and hydrate skin.

- Gentle exfoliating action comes from biodegradable Jojoba esters known for their moisturizing properties to the skin
- Greater Burdock Extract helps purify and tone skin
- Botanical and fruit extracts enhance the aromatic experience

60203255 | 2.5 oz/70g

PORE REDUCING TONER

Pore Reducing Toner contains CPTG® essential oils of Lavender, Ylang Ylang, and German Chamomile to calm sensitive skin while innovative fruit and plant extracts tone and balance skin, increase hydration, and visibly reduce the appearance of pores to support a healthy-looking complexion.

- Aloe, watermelon, and apple extracts tone and balance the skin
- Rich in oligosaccharides, Lentil Extracts increase skin hydration, reduce the appearance of oily skin, tone the skin, and visibly reduce the appearance of pores
- Witch Hazel is a natural astringent that helps remove excess oil from the skin and reduces the appearance of pores

60203257 | 4 fl oz/118mL

TIGHTENING SERUM

Featuring CPTG® essential oils of Frankincense, Hawaiian Sandalwood, and Myrrh, dōTERRA Tightening Serum is scientifically formulated to reduce the appearance of fine lines and wrinkles and promote skin hydration. Natural extracts and gums combine with powerful anti-aging ingredients for firmer, younger-looking skin.

- Contains rhizobian and acacia gum, which provide “lifting” benefits
- Beech Tree Bud Extract tightens and smooths the appearance of skin

60203256 | 1 fl oz/30mL

ANTI-AGING MOISTURIZER

dōTERRA Anti-Aging Moisturizer combines cutting-edge ingredients with the CPTG® essential oils of Lavender, Jasmine, Geranium, and Frankincense to moisturize and soften skin while providing anti-aging benefits. Peptides and botanicals target the visible signs of aging by improving skin tone and moisturizing the skin, helping to keep skin looking young and vibrant.

- Contains ingredients that nourish the skin, helping to reduce the appearance of wrinkles
- Olive Fruit Extract is specifically designed for moisturizing and overall skin care
- Peptides help firm and smooth skin, improving skin tone and texture and helping to reduce the appearance of fine lines and wrinkles

60203239 | 1.7 fl oz/50mL

HYDRATING CREAM

dōTERRA's Hydrating Cream is packed with emollient-rich ingredients and probiotics to provide intense hydration and nourishment to the skin, helping reduce the appearance of fine lines and wrinkles. Probiotics reinforce the skin's natural barrier, helping improve skin's health and beauty and encouraging suppler, younger-looking skin.

- Lactococcus Ferment Lysate helps reinforce the skin's natural barrier, helping promote overall skin health and a youthful appearance
- *Laminaria digitata* (Oarweed) extract comes from an algae rich in amino acids and polypeptides and is combined with mugwort extract to soothe and calm the skin

60203243 | 1.7 oz/48g

IMMORTELLE ANTI-AGING BLEND

A proprietary blend of powerfully renewing, rare essential oils, used throughout history for their beautifying benefits, Immortelle Anti-Aging Blend is formulated to nourish skin. This essential oil blend of Frankincense, Sandalwood, Lavender, Myrrh, Helichrysum, and Rose helps sustain smoother, more radiant, and youthful-looking skin.

- Reduces the appearance of fine lines and wrinkles
- Helps reduce the appearance of aging skin

60204469 | 10mL roll-on

ANTI-AGING EYE CREAM

dōTERRA Anti-Aging Eye Cream combines clinically proven ingredients with CPTG® essential oils of Frankincense, Ylang Ylang, and Blue Tansy to target the signs of aging around the delicate eye area, helping reduce the appearance of fine lines and wrinkles over time. This innovative formula moisturizes, decreases the appearance of dark circles, and improves skin firmness and tone. The unique steel rollerball applicator cools and soothes under-eye skin, helping reduce the appearance of puffiness and dark circles while gently applying cream to targeted areas.

- Clinically tested
- Meadowfoam seed oil provides deep moisture
- Biopolymers made from Pullulan and Red Algae Extract provide a noticeable tightening and lifting effect from the first use
- Bakuchiol helps tone and tighten the skin, which helps improve the appearance of fine lines and wrinkles and helps prevent future signs of aging

60203242 | 0.5 fl oz/15mL

CHOOSE A KIT AND SAVE:**ESSENTIAL SKIN CARE KIT**

Includes Facial Cleanser, Invigorating Scrub, Pore Reducing Toner, Tightening Serum, Anti-Aging Eye Cream, Anti-Aging Moisturizer, and Hydrating Cream.

60207838

**1 Purchase the Customizable Essential Skin Care Kit...**

Includes Facial Cleanser, Invigorating Scrub, Pore Reducing Toner, Tightening Serum.

60207839

2 ...and add up to two products per kit order at an additional savings.

Anti-Aging Eye Cream



Anti-Aging Moisturizer



Hydrating Cream



Beautiful, shiny hair with
dōTERRA® SALON ESSENTIALS®
HAIR CARE

dōTERRA Salon Essentials® Hair Care products are inspired by the concept that extremely pure botanical extracts combined with the most advanced technological ingredients will provide unparalleled hair care benefits that optimize beautiful hair and a healthy scalp. Carefully selected CPTG® essential oils deliver targeted benefits in all four products. Protecting Shampoo, Smoothing Conditioner, Root to Tip Serum, and Healthy Hold Glaze work collectively or individually to promote healthy, soft, and beautifully shiny hair.

CLINICALLY SUPPORTED BENEFITS OF THE ESSENTIAL HAIR CARE INGREDIENTS

- Helps protect color-treated hair
- Proven softening effects
- Better conditioning and detangling
- Maintains moisture capacity in both hair and scalp
- Strong and smooth-looking hair
- Less hair breakage
- Proprietary blend of essential oils for healthy-looking hair and scalp



dōTERRA SALON ESSENTIALS® PROTECTING SHAMPOO

Enjoy the professional formulation of CPTG® essential oils, gentle cleansers, and botanical extracts in dōTERRA Salon Essentials Protecting Shampoo.

- Features a gentle lathering and cleansing boost from Wild Orange and Lime and plant extracts
- Gently removes impurities collected on the hair and scalp
- Lightly moisturizes hair, leaving it salon soft and touchable

36221507 | 8.46 fl oz/250mL

dōTERRA SALON ESSENTIALS® SMOOTHING CONDITIONER

Give your hair a smooth, finished look and protect it with the professional formula of dōTERRA Salon Essentials Smoothing Conditioner.

- Features conditioning emollients, botanical extracts, and natural proteins
- Includes a proprietary blend of CPTG® essential oils for the hair and scalp
- Smooths hair and provides an anti-static effect

36231507 | 8.46 fl oz/250mL

dōTERRA SALON ESSENTIALS® HEALTHY HOLD GLAZE

Get the all-in-one benefits of a flexible hold, health, and shine for your hair with dōTERRA Salon Essentials Healthy Hold Glaze.

- Provides immediate conditioning, smoothing, and shine
- When hair is untamable, apply for a light hold and perfect, soft style
- Helps keep hair looking healthy, even after styling
- Heat-activated conditioning

36271507 | 4 fl oz/120mL

dōTERRA SALON ESSENTIALS® ROOT TO TIP SERUM

The Root to Tip Serum provides a healthy environment for your scalp and maximizes the strength and shine of your hair.

- Infused with Lavender, Peppermint, Marjoram, Cedarwood, Lavandin, Rosemary, Niaouli, and Eucalyptus
- Provides extended protection and hydration to your scalp and hair

60200564 | 1 fl oz/30mL



PROTECTING SHAMPOO 2-PACK

60202760

SMOOTHING CONDITIONER 2-PACK

60202761

SHAMPOO AND CONDITIONER

60202762

Pamper yourself with dōTERRA® SPA

dōTERRA SPA is a line of CPTG® essential oil-infused products that provide an aromatic and pampering at-home spa experience. Each product has been carefully formulated with natural ingredients that leave your skin feeling soft, smooth, and fresh all day long.



CLARIFYING MUD MASK

The dōTERRA SPA Clarifying Mud Mask is a natural clay mask that provides purifying and clarifying benefits while reducing the appearance of pores, fine lines, and wrinkles.

- Infused with Myrrh, Juniper Berry, and Grapefruit—known for their cleansing and smoothing benefits
- Shea butter provides moisturization and balances the skin
- Malachite extract is rich in copper and provides clarifying benefits

37491507 | 4 oz/113.4g

MOISTURIZING BATH BAR

dōTERRA SPA Moisturizing Bath Bar is a one-of-a-kind bar that provides a unique feel, lather, aroma, and cleansing experience.

- Bergamot essential oil purifies and soothes skin
- Grapefruit is cleansing to the skin and has an energizing scent that uplifts mood
- Jojoba seed oil deeply moisturizes

60210230 | 4 oz/113g

CITRUS BLISS® HAND LOTION

dōTERRA SPA Citrus Bliss Hand Lotion is a light and silky lotion infused with hydrating seed oils and nourishing botanicals. This non-greasy formula absorbs quickly yet provides optimal moisture for healthy-looking hands.

- Citrus Bliss essential oil blend's refreshing aroma helps reduce stress and uplifts mood
- Sunflower and macadamia seed oils are known for their exceptional moisturizing properties and ability to retain moisture in the skin
- Convenient size—perfect for travel or for use while at home or work

60200484 | 2.5 fl oz/75mL

HAND & BODY LOTION

Indulge your skin in dōTERRA SPA Hand & Body Lotion—a light, non-greasy formula that contains jojoba and macadamia seed oils, murumuru and theobroma seed butters, and nourishing plant extracts.

- Easily blend with your favorite essential oil for a customized aromatic experience
- Sunflower and macadamia seed oils are known for their exceptional moisturizing properties and ability to retain moisture in the skin
- Non-greasy formula absorbs quickly leaving skin looking healthy, soft, and smooth

60202017 | 6.7 fl oz/200mL

REFRESHING BODY WASH

dōTERRA SPA Refreshing Body Wash is a natural, oil-infused body wash that provides a rich cleansing and aromatic spa experience.

- Bergamot essential oil purifies and soothes skin and provides an uplifting, yet grounding aroma
- Grapefruit is cleansing to the skin and has an energizing scent that uplifts mood
- Sodium Methyl Oleoyl Taurate is a sulfate-free mild surfactant derived from nature and is readily biodegradable

37461507 | 8.45 fl oz/250mL

LIP BALM

dōTERRA SPA Lip Balm is a natural formula containing plant oils, botanicals, and essential oils to hydrate and soothe lips while delivering the unique scent and taste of essential oils. Enjoy our original flavor with the uplifting blend of Wild Orange and Peppermint. Experience the scents of paradise with Yang Yang, Clementine, and Lime found in our Tropical Lip Balm; or, invigorate the senses with our Herbal Lip Balm containing Lemon Verbena, Marjoram, and Spearmint.

- Each lip balm contains a select blend of essential oils that provides a unique sensory experience
- Moringa oil is an emollient that helps improve how the lips look and feel
- Avocado oil provides hydration and essential fatty acids, and softens lips to keep them looking healthy

ORIGINAL

60202076 | 0.16 oz/4.5g

TROPICAL

60202083 | 0.16 oz/4.5g

HERBAL

60202078 | 0.16 oz/4.5g





The dōTERRA Healing Hands Foundation® is dōTERRA International's registered 501(c)(3) non-profit organization committed to improving lives through partnering with organizations that offer hope to millions around the world. The foundation seeks to bring healing and hope to the world, for lives free of disease and poverty, and to ultimately empower impoverished communities with the tools needed to become self-reliant. dōTERRA International provides all the overhead and administrative costs of the dōTERRA Healing Hands Foundation®, ensuring that 100 percent of all donations go directly to those receiving aid. For more information, please visit doterrahealinghands.org.



dōTERRA® SPA ROSE HAND LOTION

dōTERRA SPA Rose Hand Lotion is a light, alluring lotion with CPTG® Rose essential oil that promotes smooth, beautiful skin. This silky formula contains natural moisturizers and humectants that leave hands soft, supple, and nourished. Known for its skin-beneficial properties, Rose essential oil enhances this lotion with the authentic and uplifting aroma of rose petals.

- Bulgarian Rose essential oil is known for its ability to promote smooth, glowing skin
- Sunflower and macadamia seed oils are known for their exceptional moisturizing properties and their ability to retain moisture in the skin
- Non-greasy formula absorbs quickly leaving skin looking healthy, soft, and smooth

60201164 | 3.3 fl oz/100mL

dōTERRA HOPE® TOUCH

dōTERRA Hope Touch is a distinct essential oil blend that combines the fresh scent of Bergamot with Ylang Ylang, Frankincense, and the sweet scent of Vanilla Bean Absolute. With each purchase of dōTERRA Hope Touch, the full purchase price is donated to the dōTERRA Malaysia Healing Hands Initiative.

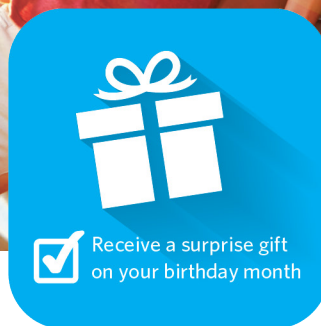
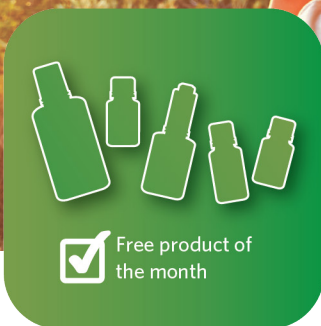
- Apply to wrists, neck, and pulse points for a personalized fragrance
- Keep in purse and apply throughout the day to uplift mood
- Roll on a sachet and keep in drawers or closets to give clothes a fresh scent

60202015 | 10mL roll-on



LOYALTY REWARDS ★ PROGRAM ★

Turn your shopping into rewards.



The dōTERRA® LOYALTY REWARDS PROGRAM

Do you have a favorite dōTERRA product you cannot live without? Would you like to earn free product every time you place an order? The dōTERRA Loyalty Rewards Program (LRP) provides a convenient way to receive an automatic monthly order of your favorite dōTERRA products delivered directly to your home. Each month you participate in the Loyalty Rewards Program, you earn an increasing number of LRP credits that can be used as cash to purchase product—earn up to 30 percent on qualified LRP orders! You can change the products in your monthly order or cancel your LRP agreement at any time without obligation. Please talk to the Wellness Advocate who gave you this product guide for more information.

dōTERRA®

dōTERRA Malaysia Sdn Bhd 201401037485 (1113630-U) (AJL932137)

Hotline: +603 2633 7888 **Email:** malaysia@doterra.com

Except as indicated, all words with trademark or registered trademark symbols are trademarks or registered trademarks of dōTERRA Holdings, LLC. MY Product Guide

© 2018 dōTERRA Holdings, LLC, 389 South 1300 West, Pleasant Grove, UT 84062 USA • doterra.com

CPTG®

Note: All information stated in the material is correct at time of printing and subject to change without notice.

Updated on 01072021